

MERIDIAN[®]

PARTS BOOK



BULK SEED TENDER[®]
240 FF BASIC SEED EXPRESS[™]

This page intentionally left blank

TABLE OF CONTENTS

| DESCRIPTION | PAGE |
|--|-------------|
| 240 FF Seed Tender Base Model. | 1 |
| Engine and Hydraulic Tank | 9 |
| Shock Load Dampener | 12 |
| Slide Gate Assembly | 14 |
| Frame, Axles and Fenders | 18 |
| Hydraulic Layout | 20 |
| 6" Hydraulic Conveyor 240 FF Basic | 22 |
| Turret Assembly | 28 |
| Warranty Statement | |

PATENT INFORMATION



Meridian® continuously enhances its product offering through product improvements and new product innovations. Marketplace feedback, technological innovation, new materials and manufacturing methods, and a philosophy of continuous improvement constantly challenge the company to develop new and better ways of addressing market needs. Meridian® is committed to innovation and reinvestment and as a result, the company maintains a portfolio of patents and intellectual property. For more information on our patents please see our website:

www.meridianmfg.com/patents

240 FF SEED TENDER BASE MODEL

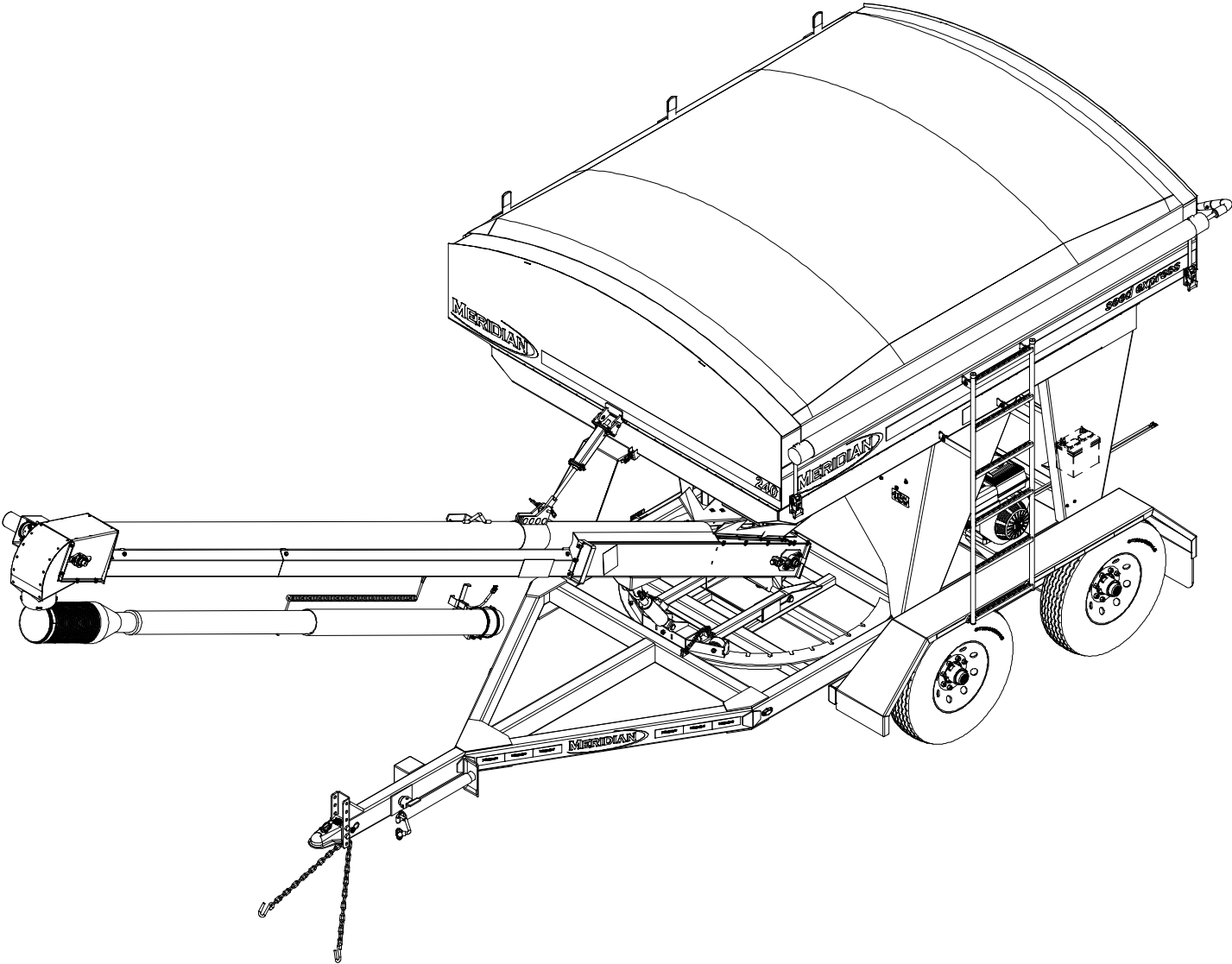
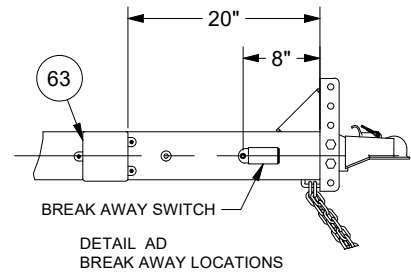
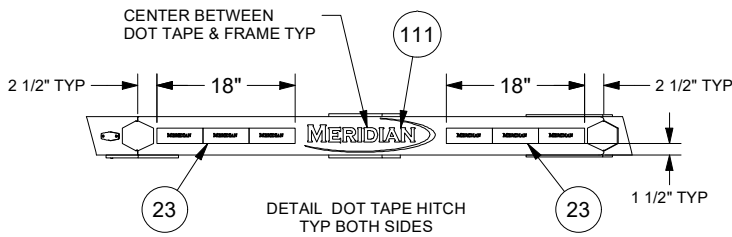
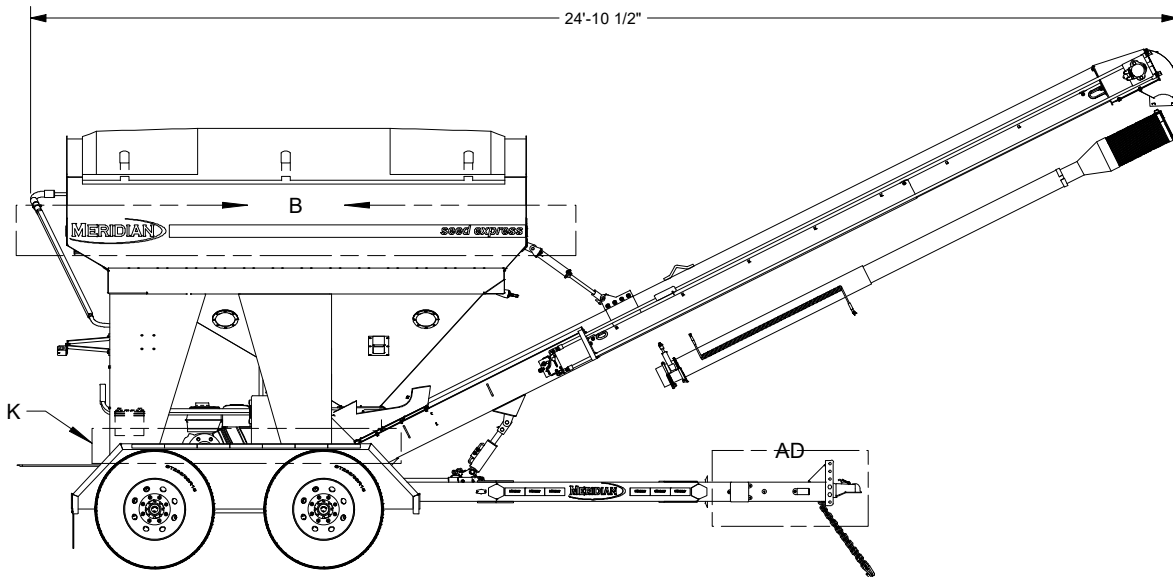
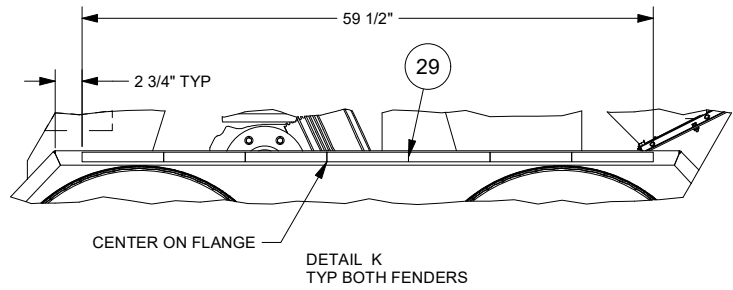
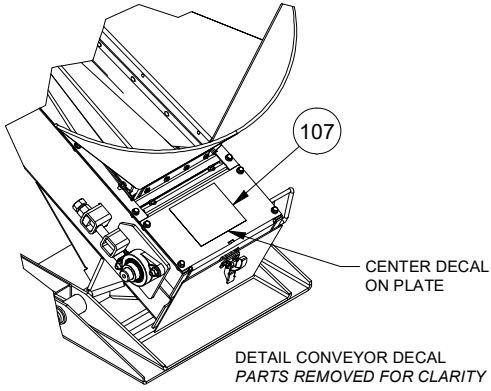
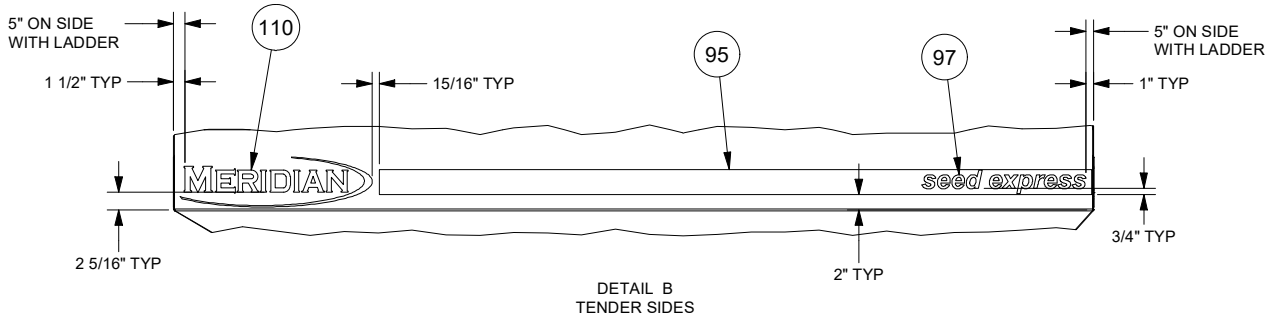
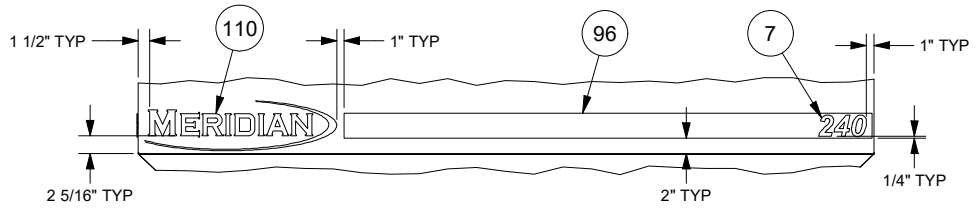


Table 1 - Tender 240 Forward Facing Base Model

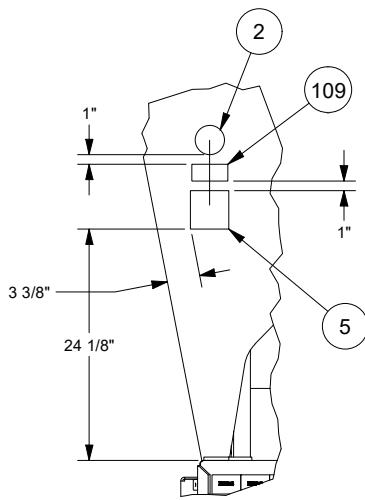
| ITEM | QTY | PART # | DESCRIPTION |
|------|-------|--------|---|
| 1 | 2 | 10038 | BOLT, HEX, 5/16-18 UNC X 2.5 STEEL, MILD |
| 2 | 1 | 10235 | PATENT DECAL |
| 3 | 8 | 10283 | 5/8" FLAT WASHER GR. 8 |
| 4 | 8 | 10285 | 5/8-11 UNC LOCKNUT GR. 8 |
| 5 | 1 | 10479 | DECAL BUILT IN AMERICA 4" |
| 6 | 2 | 10570 | BOLT, HEX, 1/4-20 UNC X 2.25 STEEL, MILD |
| 7 | 2 | 13149 | 240 FF DECAL |
| 8 | 8 | 14000 | HYDRAULIC OIL FILTERED 6 MICRON (GAL) |
| 9 | 3 | 14021 | GROMMET 1/2" ID X 1-1/16" OD FOR 3/16" WALL X 13/16" HOLE |
| 10 | 0.27 | 14022 | MOTOR OIL 10W-30 (GAL) |
| 11 | 1 | 14057 | CURLY CORD (2-PRONG WEATHERPAK CONNECTOR) |
| 12 | 1 | 14058 | PIGTAIL WITH POTTED SWITCH |
| 13 | 1 | 14059 | WIRE HARNESS 240FF HYD CONTROL (NOT SHOWN) |
| 14 | 1 | 14136 | WIRE HARNESS 242RT (NOT SHOWN) |
| 15 | 12 IN | 16337 | CHAIN 3/16" GRADE 30 ZINC WLL 800LBS |
| 16 | 2 | 17040 | ORIFICE 7/16"-20 JIC 37 DEG W/ 0.06375 RESTRICTION HOLE |
| 17 | 1 | 17132 | REDUCER - 24 NPT TO 16 NPT |
| 18 | 4 | 17412 | 2X3X.188 MOCAP TUBE PLUG RC2X3VBK1 |
| 19 | 1 | 17509 | CRUSH - ELECTROCUTION HAZARD DECAL |
| 20 | 2 | 17720 | ADAPTER HYD 7/16"-20 SAE ORING BOSS TO 7/16"-20 SAE 37 DEG |
| 21 | 2 | 17900 | BOLT, HEX, 1/4-20 UNC X 1.25 STEEL, MILD |
| 22 | 2 | 17996 | TAIL STOP ASSEMBLY |
| 23 | 10 | 18096 | TAPE REFLECTIVE MERIDIAN 2X6X6 (FT) |
| 24 | 2 | 18117 | TAIL LIGHT WITH 10 DIODES (LED STL-78RB) |
| 25 | 1 | 18120 | 5K, 15" STROKE, TOP WIND JACK |
| 26 | 1 | 18128 | HOLDER FOR MANUAL OMC-1 |
| 27 | 4 | 18131 | ST235/80R16-E TIRE, STEEL RIM ASSEMBLY |
| 28 | 2 | 18151 | AMBER CLEARANCE LIGHT |
| 29 | 14 | 18153 | TAPE REFLECTIVE D.O.T. 1 INCH (FT) |
| 30 | 4 | 18248 | 4" X 2" TUBE PLUG |
| 31 | 3 | 18280 | ADAPTER HYD 3/4"-16 MALE SAE ORING TO 7/8"-14 MALE SAE 37 DEG |
| 32 | 1 | 18282 | HYD ADAPTER 3/4-16 M SAE O-RIN BOSS TO 3/4-16 M SAE 37° |
| 33 | 2 | 18283 | ADAPTE HYD 3/4"-16 MALE SAE O-RING BOSS TO 9/16"-18 MALE SAE 37 DEG |
| 34 | 1 | 18285 | ADAPTER HYD 1 1/16"-12 MALE SAE ORING BOSS TO 1 1/16"-12 MALE SAE 37° |
| 35 | 1 | 18286 | ADAPTER HYD 3/4"-16 MALE SAE ORING BOSS TO 3/4"-16 FEMALE SAE 37 DEG SWIVEL |
| 36 | 1 | 18288 | ADAPTER HYD TEE 1"-11 1/2 MALE NPT TO 1 5/16"-12 MALE SAE 37 DEG |
| 37 | 1 | 18289 | ADAPTER HYD TEE 3/4"-16 FEMALE SAE 37° BULKHEAD, 3/4"-16 MALE SAE 37°, 3/4"-16 MALE SAE 37° |
| 38 | 2 | 18290 | ADAPTER HYD TEE 7/8"-14 FEMALE SAE 37° BULKHEAD, 7/8"-14 MALE SAE 37°, 7/8"-14 MALE SAE 37° |
| 39 | 1 | 18292 | ADAPTER HYD ELBOW 7/8"-14 MALE SAE ORING BOSS (LONG) TO 7/8"-14 MALE SAE 37° |
| 40 | 1 | 18293 | MONOBLOCK VALVE SINGLE SPOOL 1073201 M45-4-HP WCHA |
| 41 | 1 | 18295 | CONVEYOR ON/OFF SOLENOID |
| 42 | 2 | 18420 | PLUG, PLASTIC, 5X3X0.188" WALL - BLACK |
| 43 | 1 | 18422 | ADAPTER HYD 3/4"-14 NPT TO 7/8"-14 SAE 37 DEG |
| 44 | 4 | 18427 | U BOLT 4 X 2 X .375 |
| 45 | 2 | 18577 | HEXAGON SOCKET HEAD CAP SCREW |
| 46 | 1 | 18657 | CABLE BATTERY SET 45 IN |
| 47 | 2 | 18678 | AXLE, 7000#, 9IN, 55 1/2 CL TO CL |
| 48 | 1 | 18679 | CLAMP CUSHIONED LOOP (1/2") |
| 49 | 2 | 19063 | Ø1" TUBE PLUG - 0.844 TO 0.944 I.D. |
| 50 | 2 | 19089 | RIVET Ø3/16" (.059"-.354" GRIP) CLOSED END SS |
| 51 | 8 | 19112 | #8-32 UNC HEX NYLON NUT |
| 52 | 2 | 19126 | NUT, HEX, FLANGED, 1/4-20 UNC |
| 53 | 7 | 19128 | Ø1/4"-20 UNC NYLON HEX NUT |
| 54 | 12 | 19129 | RIVET Ø3/16" (.375"-.500" GRIP) SS WIDE DOME |
| 55 | 2 | 19133 | RUBBER BUMPER |
| 56 | 8 | 19136 | LOOM 1/2" (FT) (NOT SHOWN) |
| 57 | 8 | 19141 | SCREW #8-32 UNF X 5/8 ROUND HEAD PAN |
| 58 | 1 | 19150 | LIFT CYLINDER |
| 59 | 1 | 19243 | BOLT, HEX, 3/8-16 UNC X 2 GRADE 8 |
| 60 | 1 | 19248 | COUPLING 5/8 X 5/32 KEY |
| 61 | 1 | 19249 | COUPLING 1" X 1/4" KEY |
| 62 | 2 | 19274 | MUD FLAP, 10"X10"X1/4" THK, W/MERIDIAN LOGO |
| 63 | 1 | 19275 | BATTERY BREAKAWAY BA10-150 |
| 64 | 1 | 19289 | BELL HOUSING |
| 65 | 1 | 19291 | RED COUPLING SPIDER |
| 66 | 1 | 19294 | HYDRAULIC OIL TANK ASSEMBLY 11 GAL W/FILTER |
| 67 | 1 | 19295 | HYDRAULIC PUMP |

| | | | | | | | |
|-----|----|-------|---|-----|---|----------|--|
| 68 | 3 | 19301 | BOLT, HEX, 1/4-20 UNC X1 | 104 | 1 | 19791 | MANUAL TENDER 240 BASIC FORWARD FACING (NOT SHOWN) |
| 69 | 7 | 19307 | WASHER, FLAT 1/4 | 105 | 3 | 19794 | LYNCH PIN Ø3/16 X 1" |
| 70 | 4 | 19311 | Ø5/16"-18 UNC X 1 1/2" H.H.C.S. | 106 | 1 | 19934 | DECAL CAUTION READ MANUAL |
| 71 | 6 | 19318 | NUT, HEX, FLANGED, 5/16-18 UNC | 107 | 1 | 19936 | DECAL ROTATING PART HAZARD |
| 72 | 4 | 19321 | WASHER, FLAT 5/16 | 108 | 1 | 19939 | FALLING HAZARD DECAL |
| 73 | 1 | 19326 | BOLT, HEX, 3/8-16 UNC X 1.25 STEEL, MILD | 109 | 1 | 19984 | SERIAL NUMBER DECAL |
| 74 | 4 | 19328 | BOLT, HEX, 3/8-16 UNC X2 | 110 | 4 | 20081 | DECAL MERIDIAN 25" LG |
| 75 | 4 | 19343 | NUT, HEX 3/8-16 UNC | 111 | 2 | 20082 | MERIDIAN DECAL |
| 76 | 6 | 19347 | Ø3/8"-16 UNC NYLON LOCKNUT | 112 | 2 | 20087 | DECAL PINCH POINT HAND |
| 77 | 8 | 19348 | WASHER, FLAT 3/8 | 113 | 1 | 20526 | TUBE EXTENSION |
| 78 | 4 | 19349 | Ø3/8" LOCK WASHER | 114 | 1 | 21240-04 | THROTTLE HANDLE (6 1/4") BLACK |
| 79 | 2 | 19404 | BUSHING, NYLON 1 INCH | 115 | 1 | 21274 | HONDA GX340 (WITH IGNITION SWITCH) |
| 80 | 1 | 19405 | BUSHING | 116 | 2 | 21433-00 | HOSE CLAMP - 6IN LIGHT DUTY |
| 81 | 2 | 19447 | HANDLE GRIP | 117 | 1 | 21441-00 | SPOUT 7 IN 3 TIER |
| 82 | 1 | 19541 | BOLT, HEX, 3/8-16 UNC X 0.75 STAINLESS STEEL | 118 | 1 | 23663-00 | SHOCK LOAD DAMPENER |
| 83 | 2 | 19548 | Ø1/8" - .188 TO .250 GRIP STEEL RIVET | 119 | 1 | 24688 | COUPLER HITCH ASSM. 2 5/16" W/SFTY PIN |
| 84 | 2 | 19560 | BOLT, HEX, 1/4-20 UNC X0.75 | 120 | 1 | 26084-00 | FRONT HOPPER DECAL |
| 85 | 23 | 19564 | NUT, HEX, FLANGED, 3/8-16 UNC | 121 | 1 | 26085-00 | REAR HOPPER DECAL |
| 86 | 8 | 19567 | BOLT, HEX, FLANGED, 5/8-11 UNC X 2 GRADE 8 | 122 | 1 | 26096 | AGRI COVER TARP KIT (240RT) |
| 87 | 6 | 19568 | BOLT, HEX, FLANGED, 5/16-18 UNC X 0.75 | 123 | 1 | 26342 | LEFT SLIDE GATE HANDLE |
| 88 | 12 | 19569 | BOLT, HEX, FLANGED, 3/8-16 UNC X 1 | 124 | 1 | 26343 | RIGHT SLIDE GATE HANDLE |
| 89 | 6 | 19577 | BOLT, HEX, FLANGED, 3/8-16 UNC X 0.75 | 125 | 2 | 26576 | CONVEYOR ROTATE HANDLE |
| 90 | 4 | 19579 | SCREW, FLANGED, SELF-TAPPING 3/8-16 UNC X 1 | 126 | 7 | 27055-00 | ZIP TIE CLIP PUSH IN 23FCPM25095 FOR Ø.250" HOLE |
| 91 | 6 | 19586 | Ø5/16"-18 UNC NYLON LOCK NUT | 127 | 1 | 29369 | LADDER ASSEMBLY 240 |
| 92 | 1 | 19594 | COTTER HAIRPIN 2 3/8" X Ø.120" X 5/8" | 128 | 1 | 29869 | COLLAR |
| 93 | 2 | 19597 | Ø1/4"-14 X 3/4" HEX WASHER HEAD SELF DRILLING SCREW | 129 | 1 | 29875 | WEAR DISC |
| 94 | 8 | 19629 | WASHER, FLAT, #8 | 130 | 1 | 31507 | TURRET ASSEM 2011 MANUAL |
| 95 | 2 | 19750 | DECAL GRADIENT W/DOTS 3.25" X 98" | 131 | 1 | 31509 | FENDER BOLT ON TANDEM |
| 96 | 2 | 19751 | DECAL GRADIENT W/DOTS 3.25" X 75" | 132 | 1 | 31517 | FENDER BOLT ON TANDEM W/HOLES |
| 97 | 2 | 19758 | SEED EXPRESS DECAL | 133 | 1 | 32317 | HOSE HYD TANK TO PUMP 1" |
| 98 | 3 | 19774 | Ø1" X 5-45/64" EFFECTIVE LENGTH CLEVIS PIN | 134 | 1 | 32318 | HOSE HYD PUMP TO VALVE 1/2" |
| 99 | 1 | 19776 | Ø3/4" X 2.75" EFFECTIVE LENGTH CLEVIS PIN | 135 | 1 | 32320 | HOSE HYD VALVE TO FLOW CONTROL 1/2" |
| 100 | 1 | 19777 | Ø3/4" X 4.25" EFFECTIVE LENGTH CLEVIS PIN | 136 | 1 | 32321 | HOSE HYD FLOW CONTROL TO TANK 1/2" |
| 101 | 15 | 19779 | #8-18 X 3/4" SELF DRILLING ZINC SCREW | 137 | 2 | 32322 | HOSE HYD VALVE TO LIFT CYL 1/4" |
| 102 | 1 | 19784 | TOOL HOLDER CLIP W/SPRING STEEL ZINC #SG2 | 138 | 1 | 32323 | HOSE HYD VALVE TO TANK 1/2" |
| 103 | 2 | 19785 | Ø0.080" RINGED LOCK COTTER PIN FOR 3/4" SHAFT | 139 | 1 | 32324 | HOSE HYD VALVE JUMPER 1/2" |
| | | | | 140 | 1 | 32540 | SLIDE GATE ASSEMBLY 240FF |
| | | | | 141 | 2 | 36150-00 | SAMPLE GATE |
| | | | | 142 | 1 | 37122 | 240 BASE WELDED ASSEMBLY FF |
| | | | | 143 | 4 | 47008 | VIEW GLASS, S.S. RING ASSM. |
| | | | | 144 | 1 | 50169 | SWITCH BATTERY TOP MOUNT ASSEMBLY |
| | | | | 145 | 1 | 51807 | AUGER/CONVEYOR OPERATORS PLATE UP/DOWN |
| | | | | 146 | 1 | 80632 | Ø6" HYDRAULIC CONVEYOR 240FF BASIC |

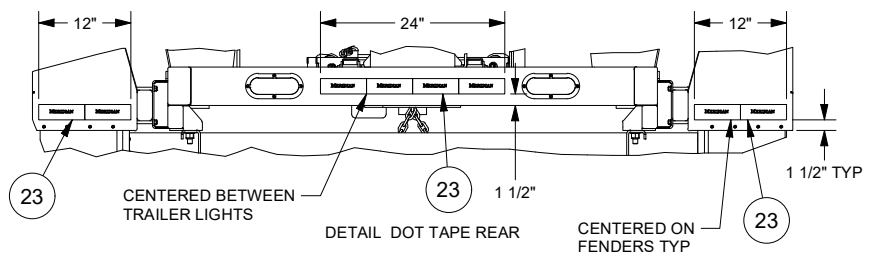
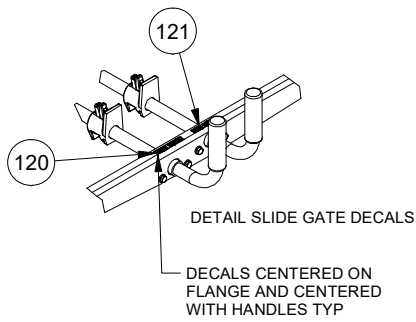
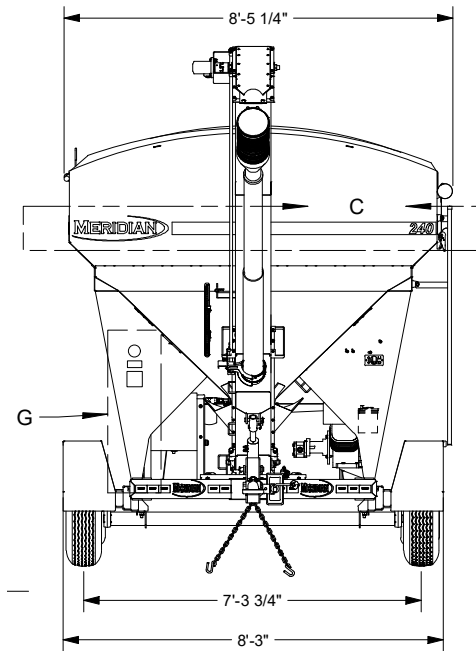


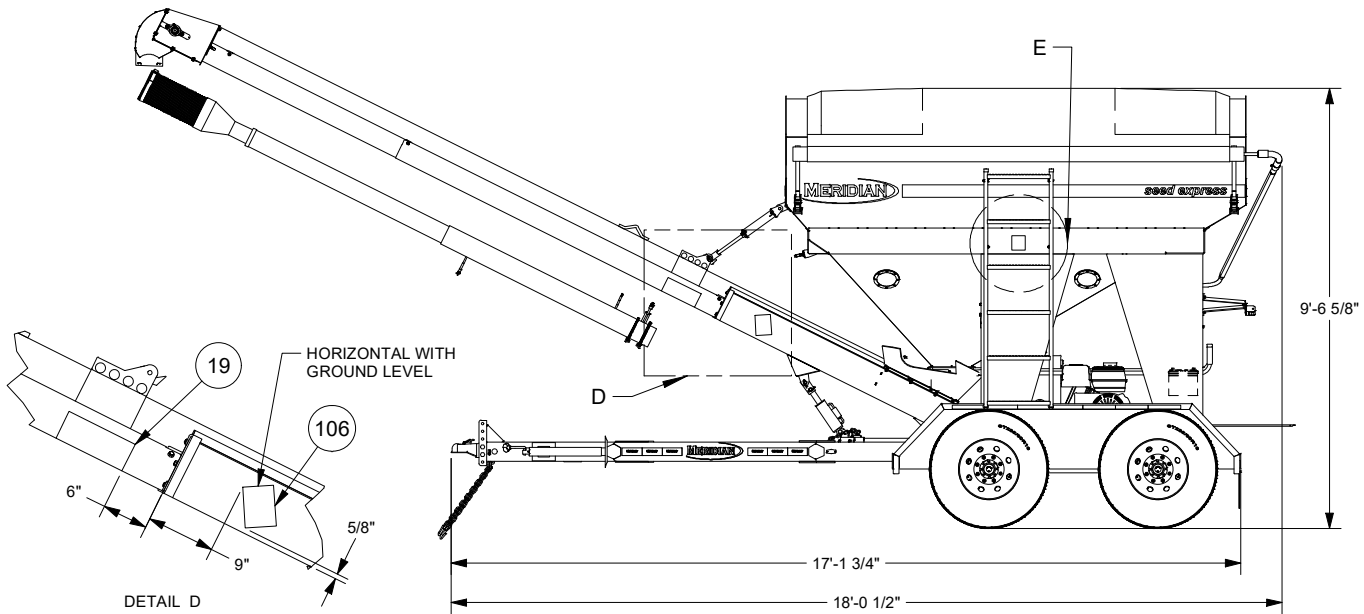
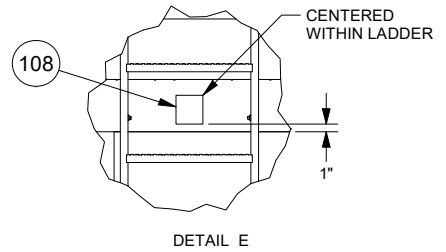
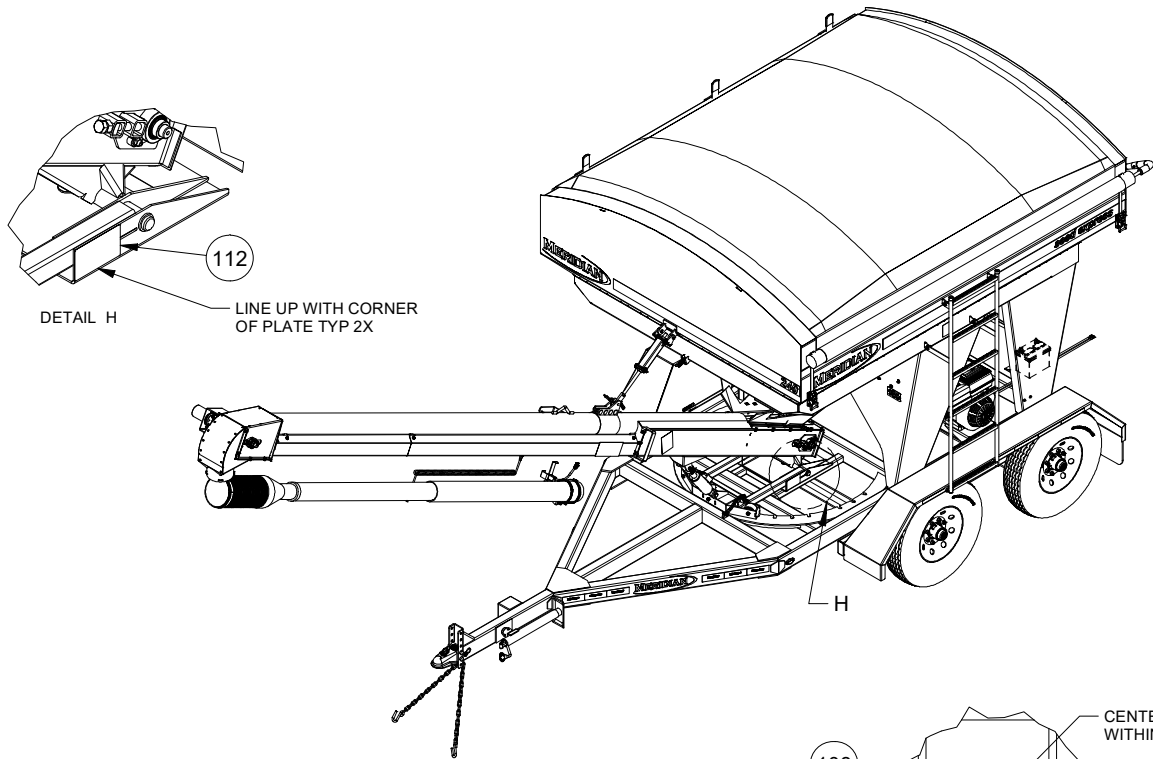


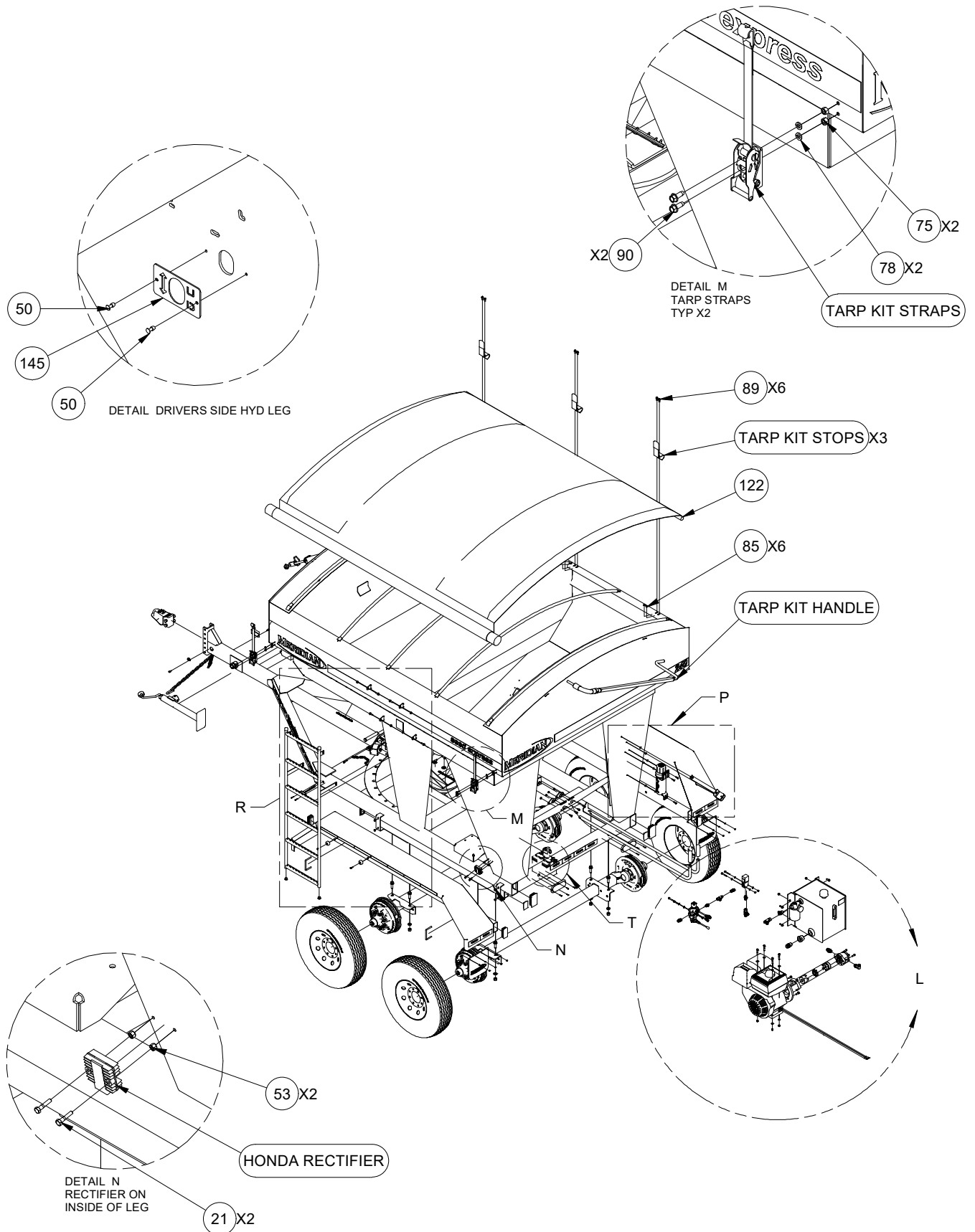
DETAIL C
TENDER FRONT & BACK

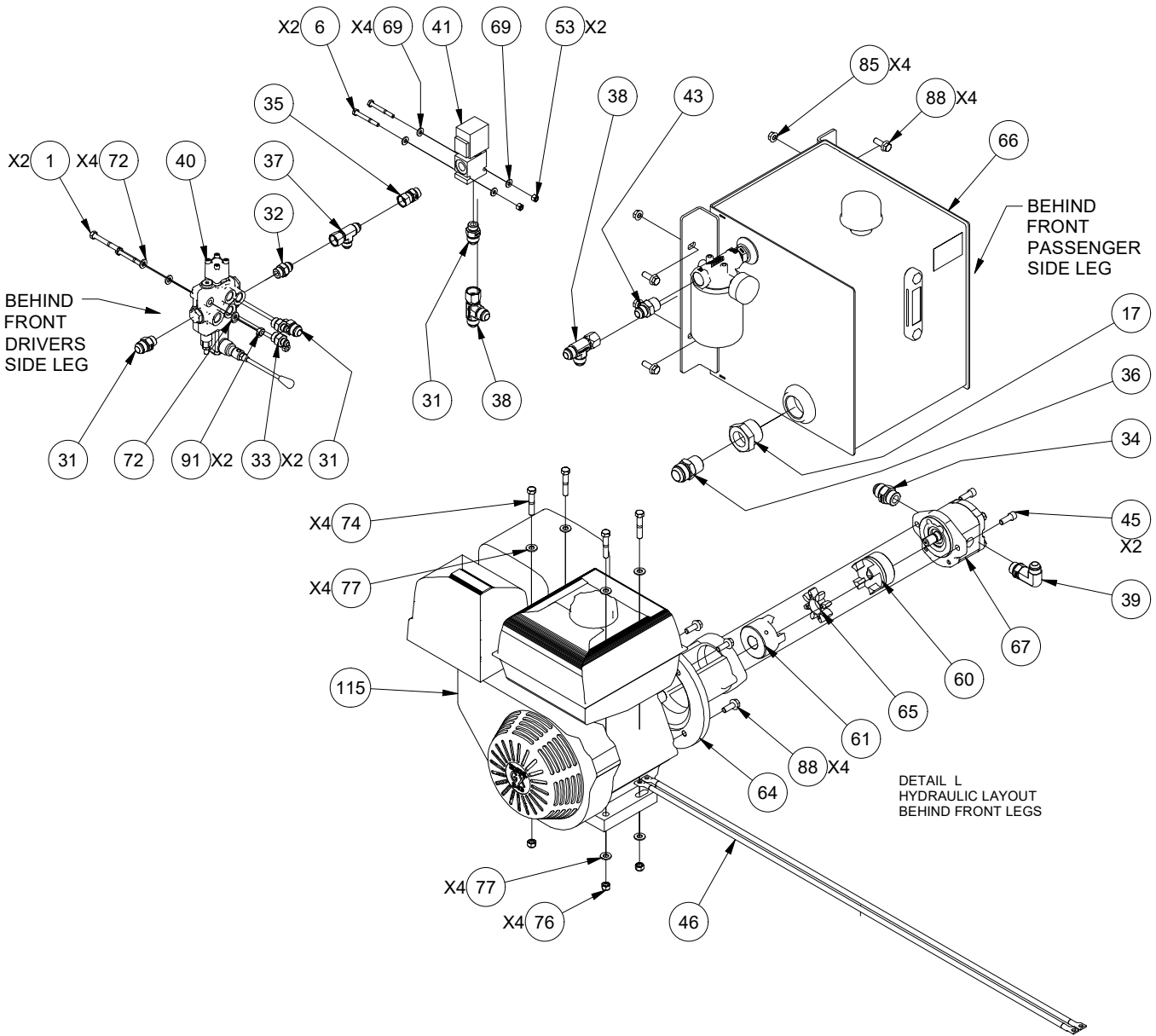


DETAIL G









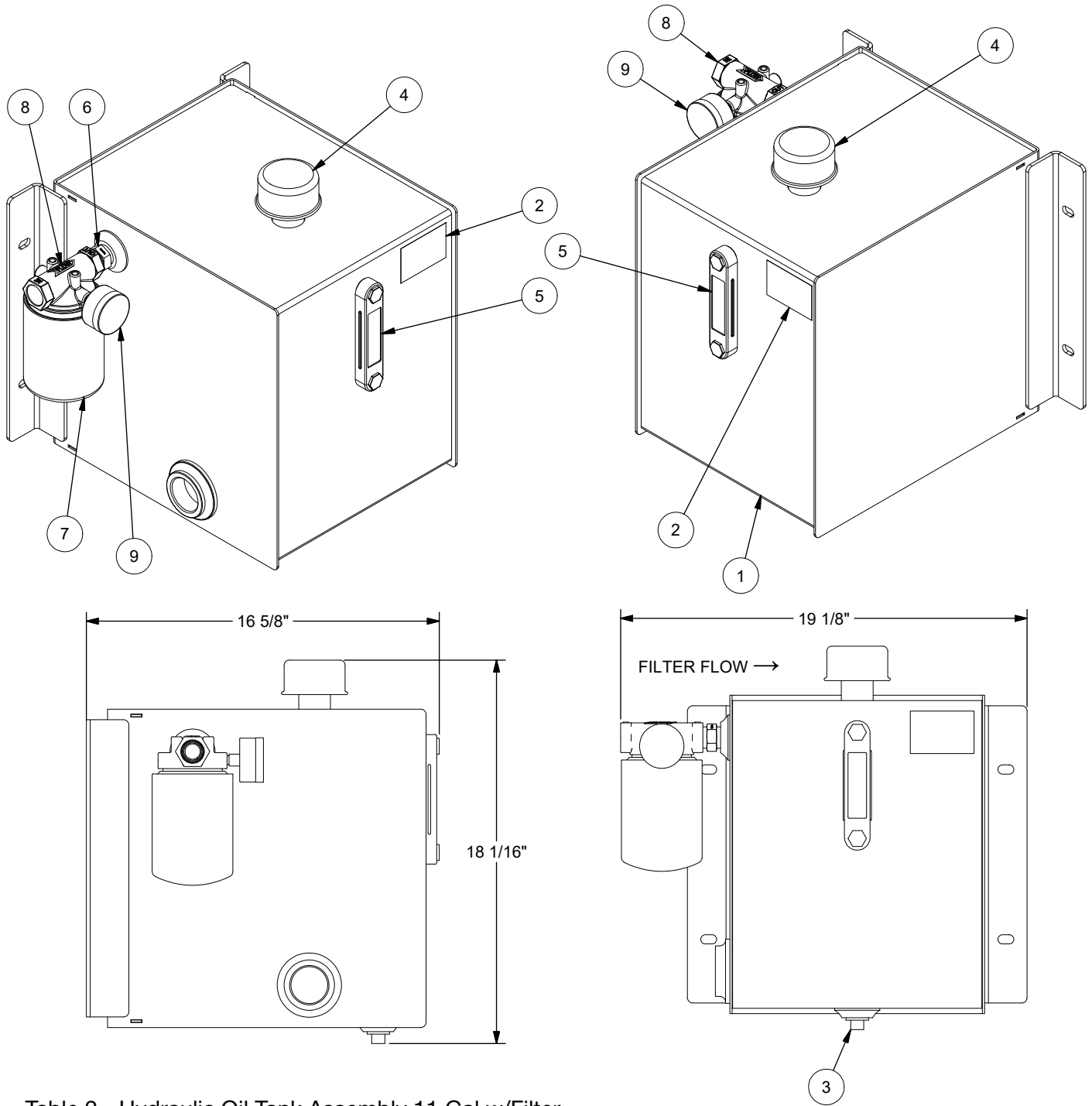
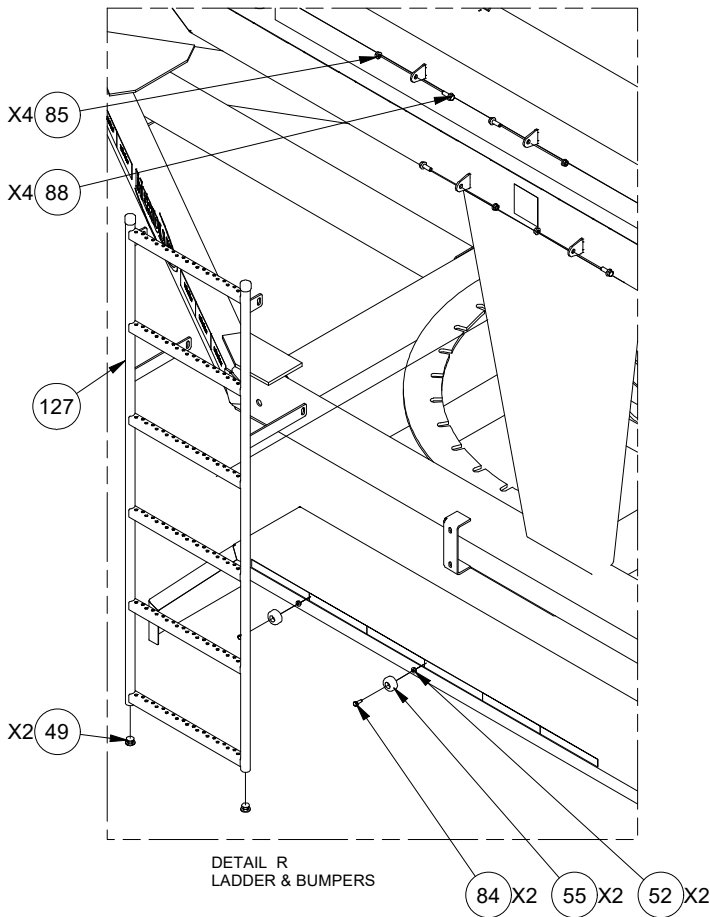
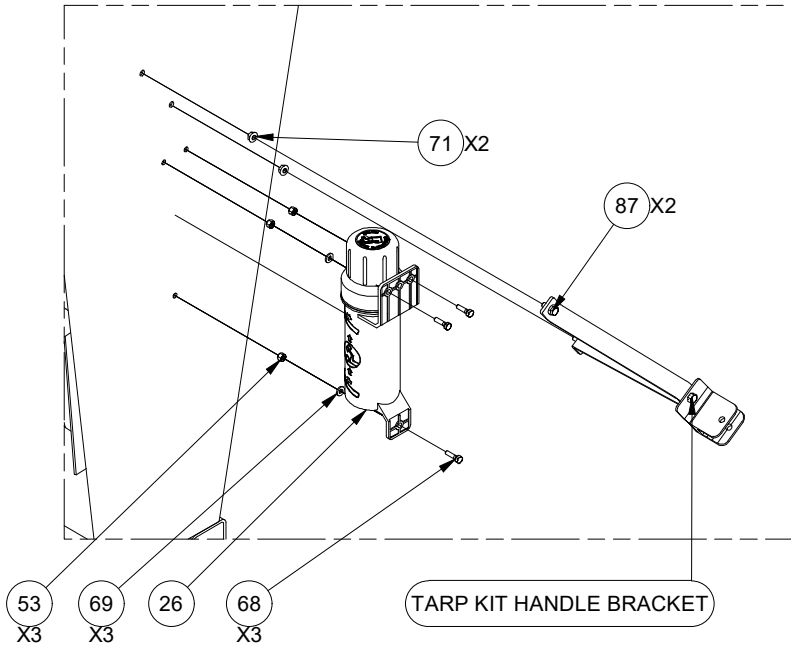


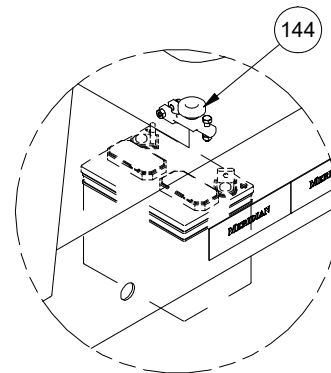
Table 2 - Hydraulic Oil Tank Assembly 11 Gal w/Filter

| ITEM | QTY | PART # | DESCRIPTION |
|------|-----|--------|---|
| 1 | 1 | 40653 | HYDRAULIC OIL TANK PAINTED 11 GAL - BLACK |
| 2 | 1 | 20088 | DECAL WARNING HOT SURFACE |
| 3 | 1 | 18006 | 3/4" SQUARE HEAD PLUG |
| 4 | 1 | 17010 | BREATHER CAP PUSH IN 1.5" ID BLK BEC061AB |
| 5 | 1 | 10536 | SIGHT LEVEL GAUGE 5" C/C W/ THERMOMETER T-LLG-5 |
| 6 | 1 | 10538 | HEX PIPE NIPPLE 3/4"-14 MALE NPT X 3/4"-14 MALE NPT |
| 7 | 1 | 17706 | FILTER, HYD, 3/4" NPT, 10 MICRON, F3653-10C |
| 8 | 1 | 17005 | HEAD, FILTER, 3/4" NPT, ZAF-07-25-1-3 |
| 9 | 1 | 17006 | GAUGE, FILTER HEAD, 1/8" NPT, PG-20 |

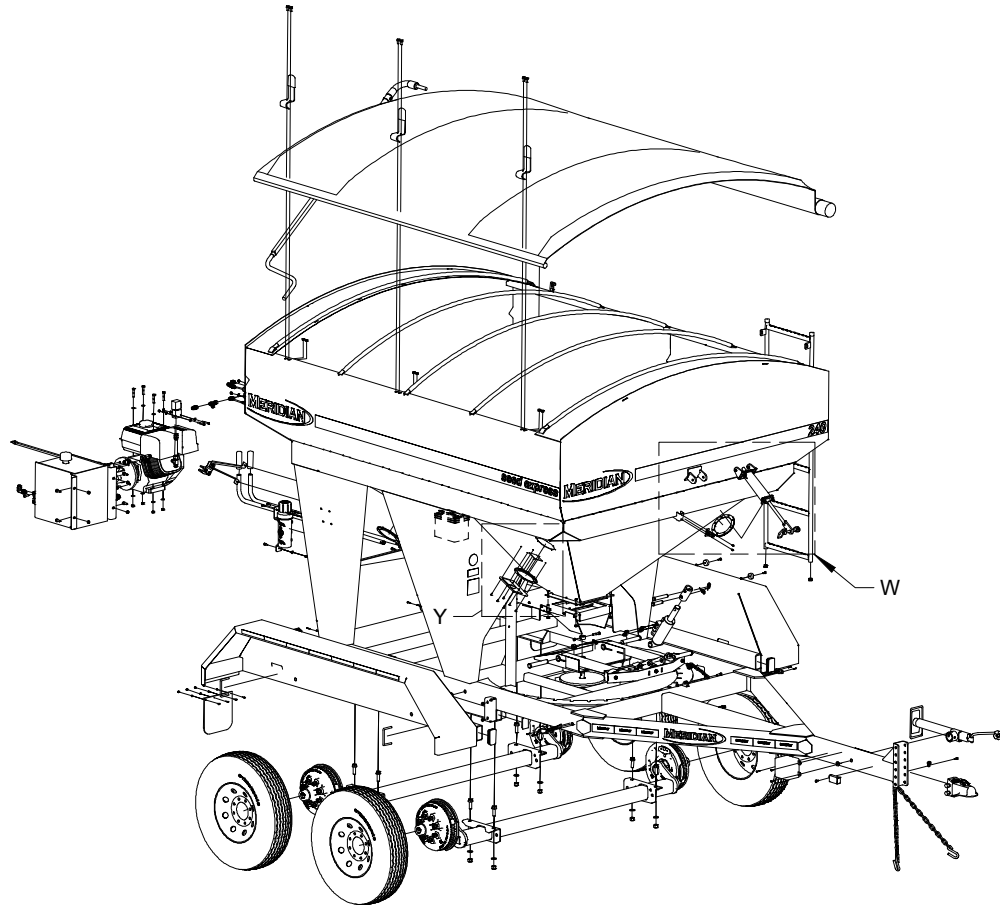
DETAIL P
MANUAL HOLDER BEHIND LEG
TARP HANDLE BRACKET ON OUTSIDE



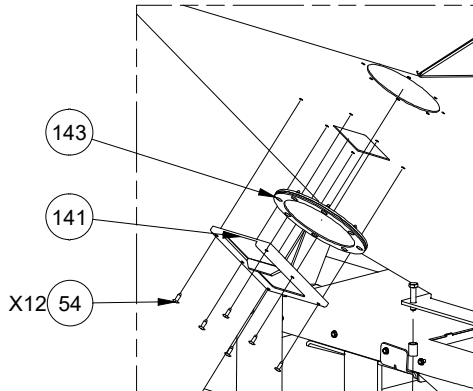
DETAIL R
LADDER & BUMPERS



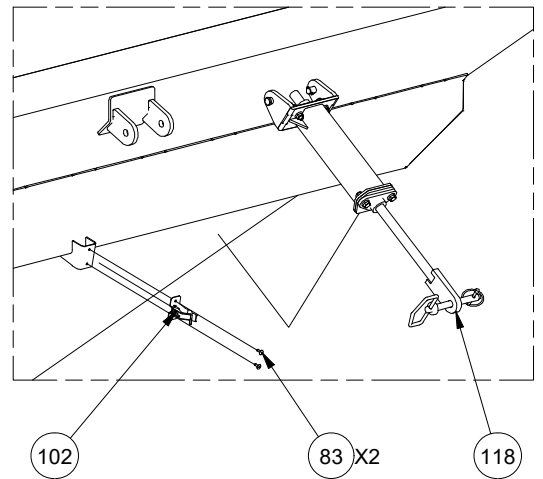
DETAIL T
BATTERY DISCONNECT
BATTERY NOT INCLUDED
ATTACH TO NEGATIVE CABLE



DETAIL Y
VIEW GLASSES & SAMPLE GATES TYP



DETAIL W
TRANSPORT DAMPENER



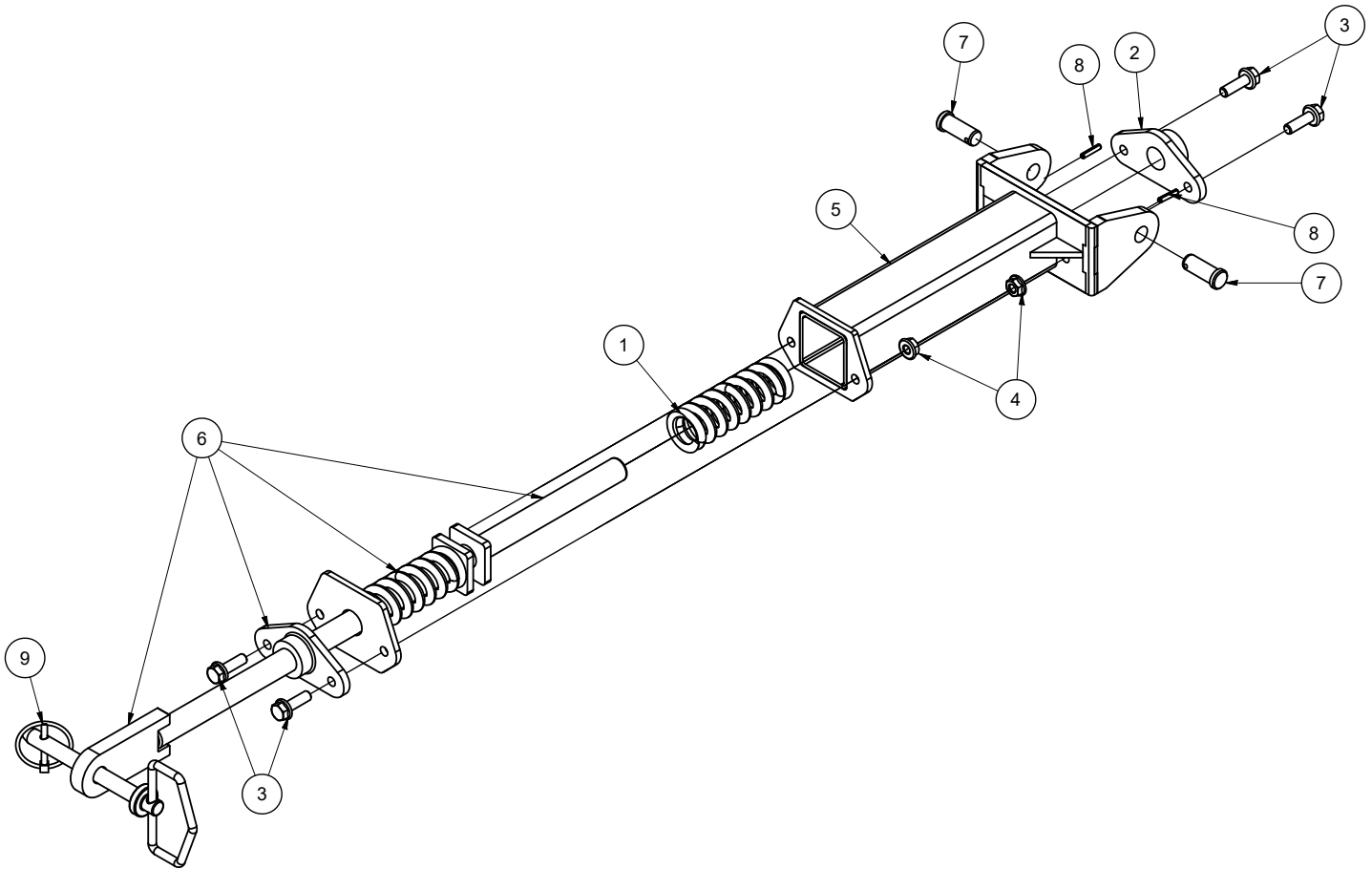
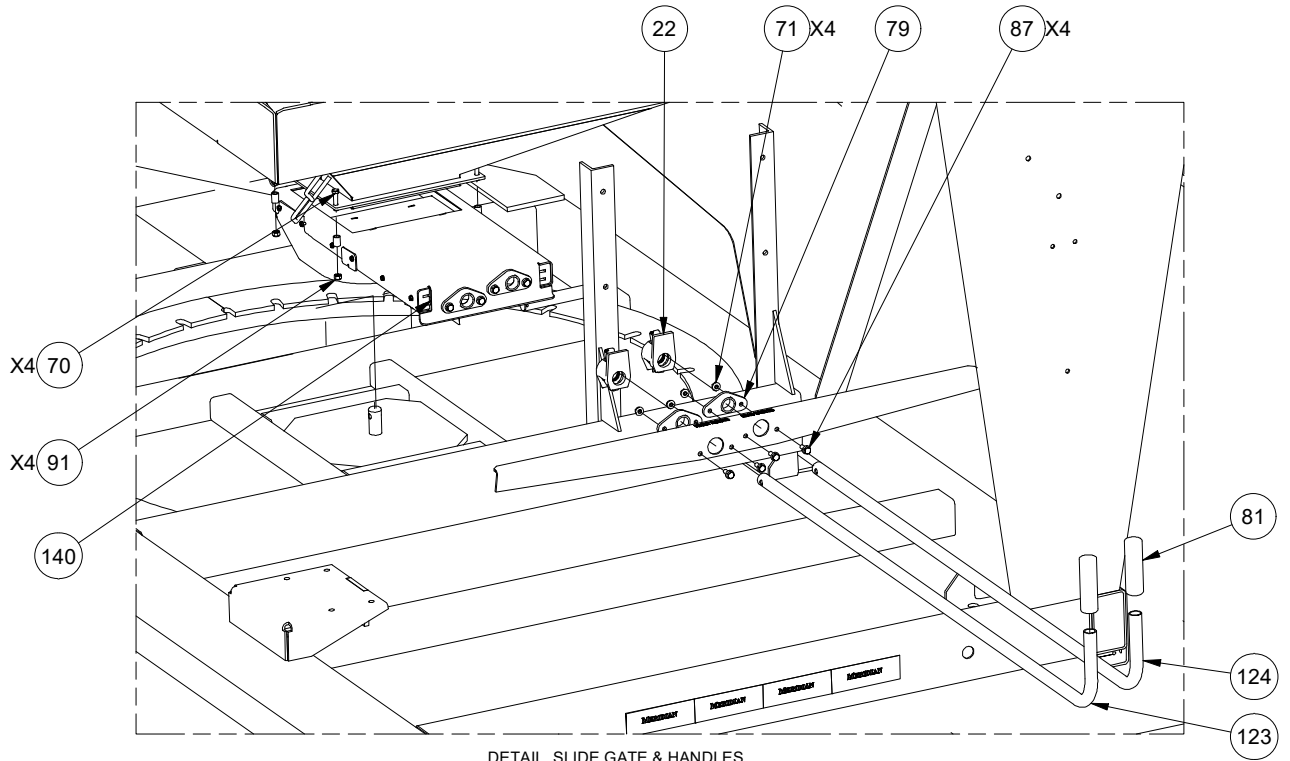
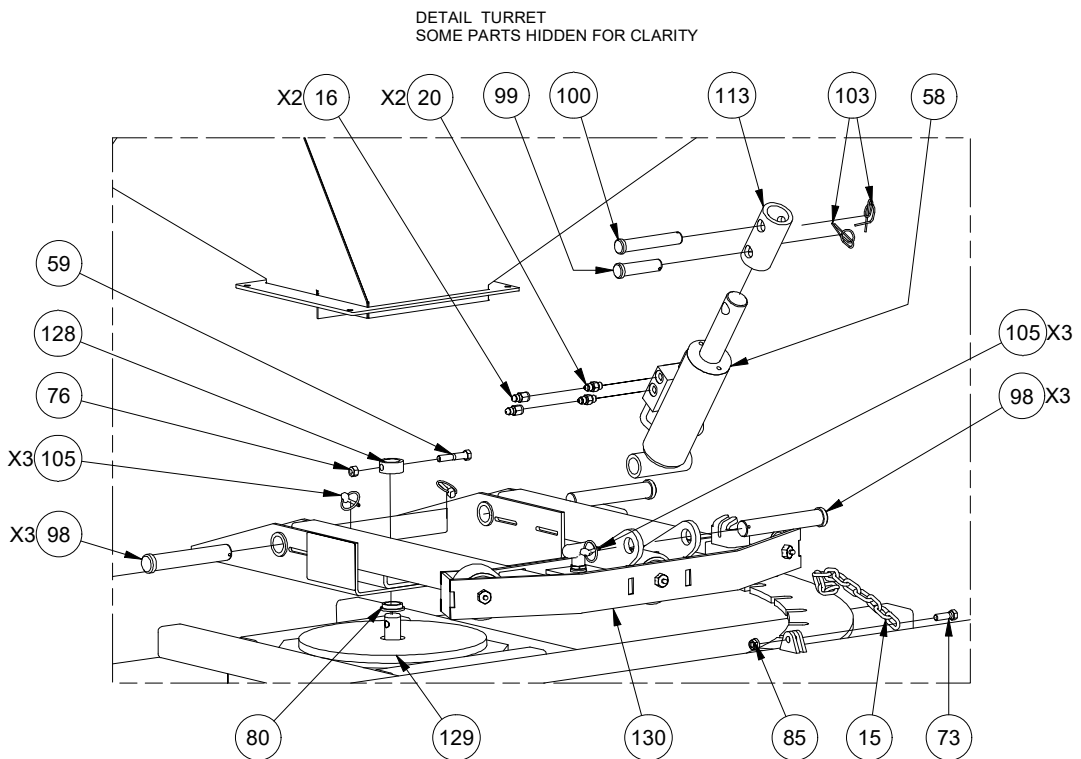


Table 3 - Shock Load Dampener

| ITEM | QTY | PART # | DESCRIPTION |
|------|-----|----------|---------------------------------------|
| 1 | 1 | 19744 | COMPRESSION SPRING |
| 2 | 1 | 19403 | BUSHING, NYLON Ø3/4" |
| 3 | 4 | 19581 | BOLT, HEX, FLANGED, 5/16-18 UNC X 1 |
| 4 | 4 | 19318 | NUT, HEX, FLANGED, 5/16-18 UNC |
| 5 | 1 | 23673-00 | BODY ASSEMBLY |
| 6 | 1 | 23662-00 | ROD ASSEMBLY |
| 7 | 2 | 19070 | PIN Ø1/2" X 1 1/4" |
| 8 | 2 | 19237 | SPRING PIN |
| 9 | 1 | 19748 | Ø1/2" X 4" EFFECTIVE LENGTH HITCH PIN |



DETAIL SLIDE GATE & HANDLES
SOME PARTS HIDDEN FOR CLARITY



DETAIL TURRET
SOME PARTS HIDDEN FOR CLARITY

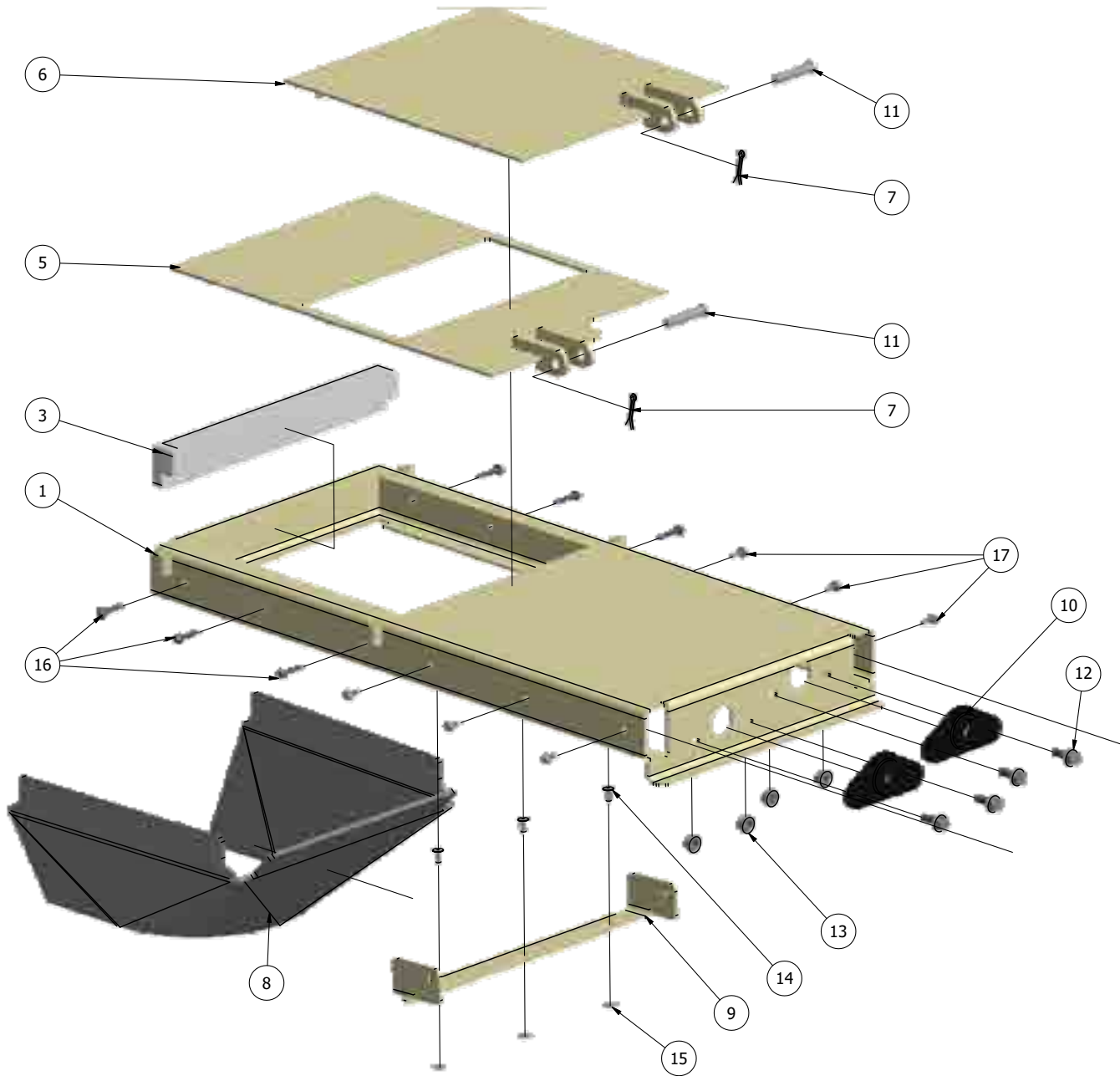
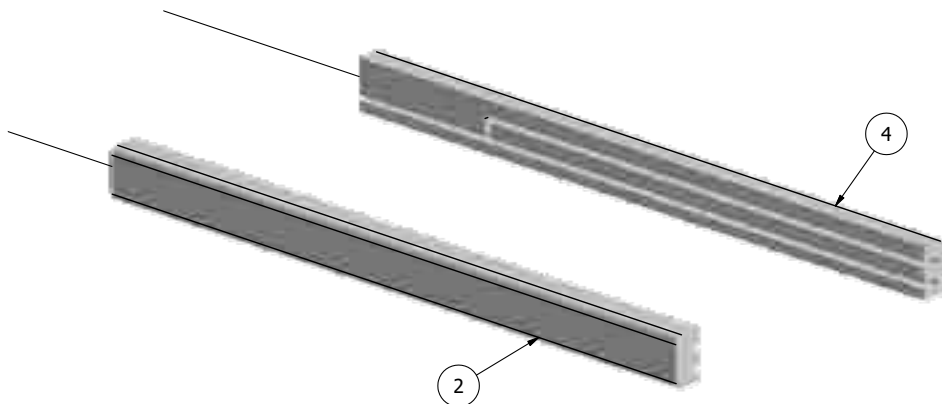
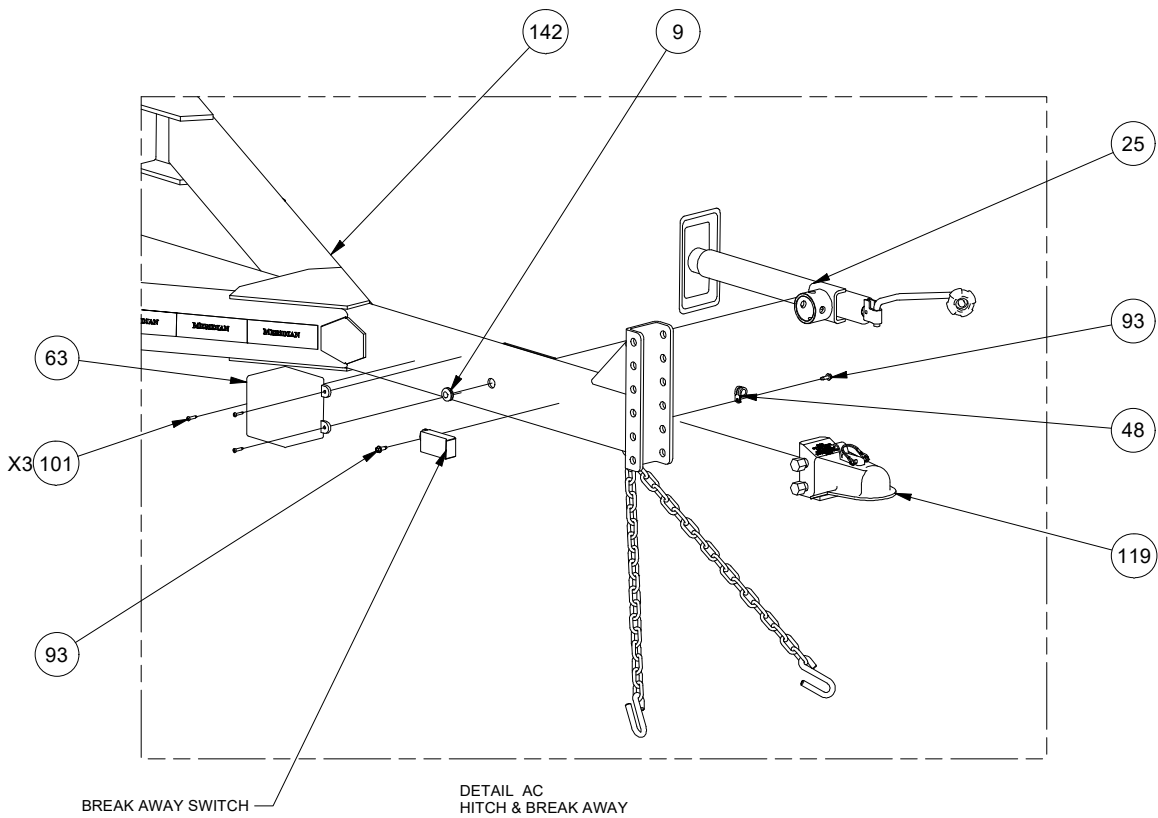
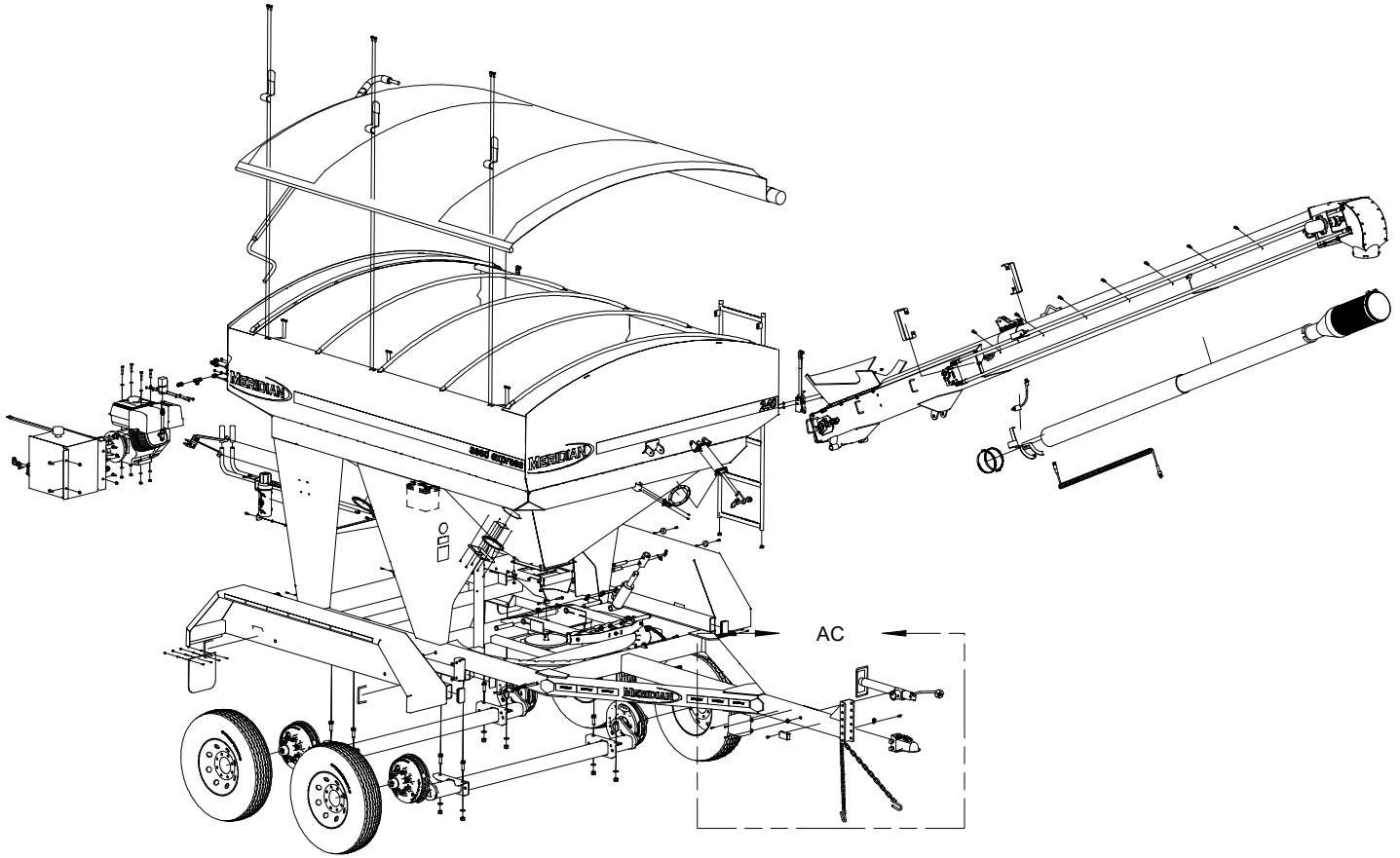
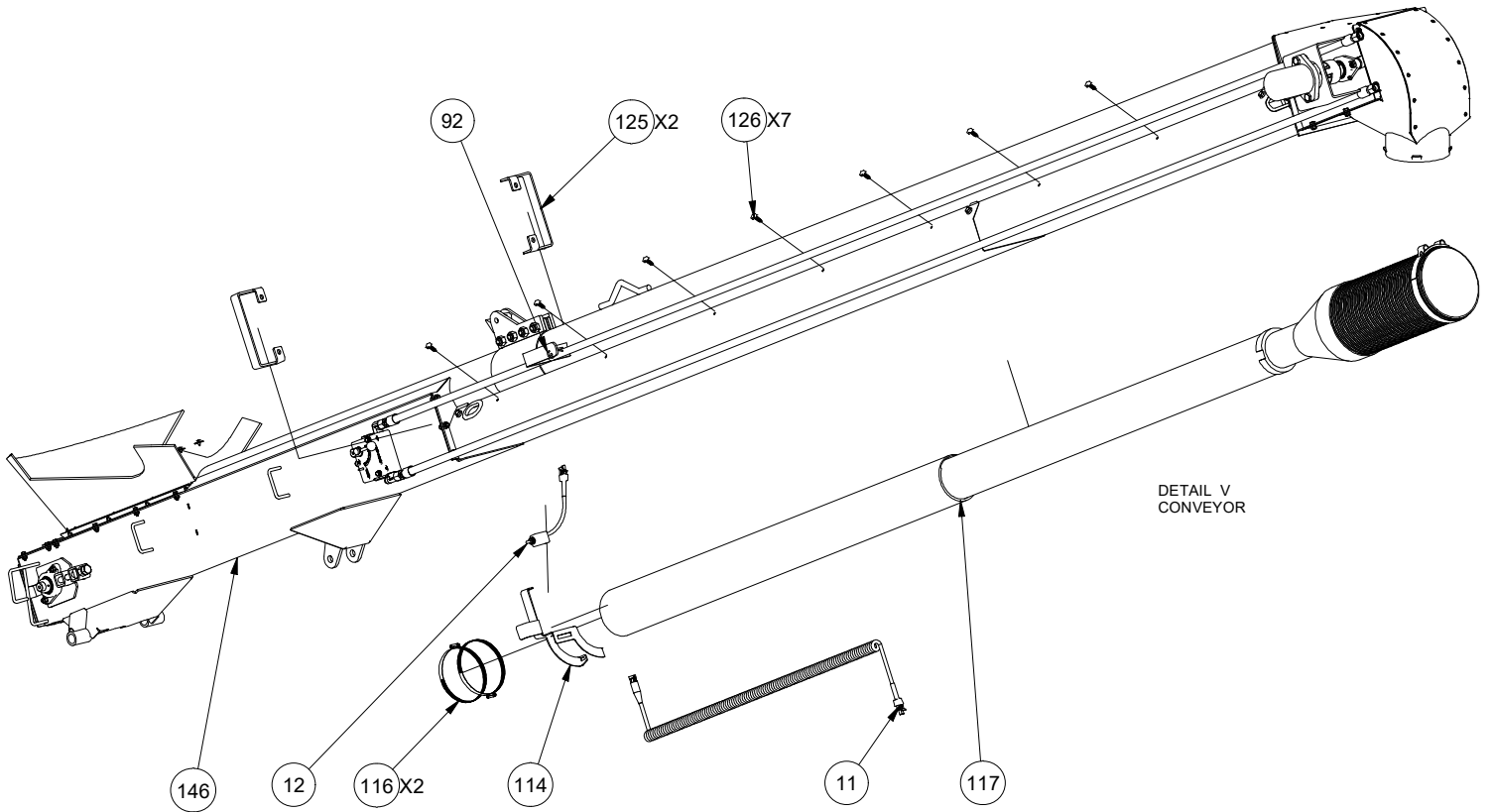


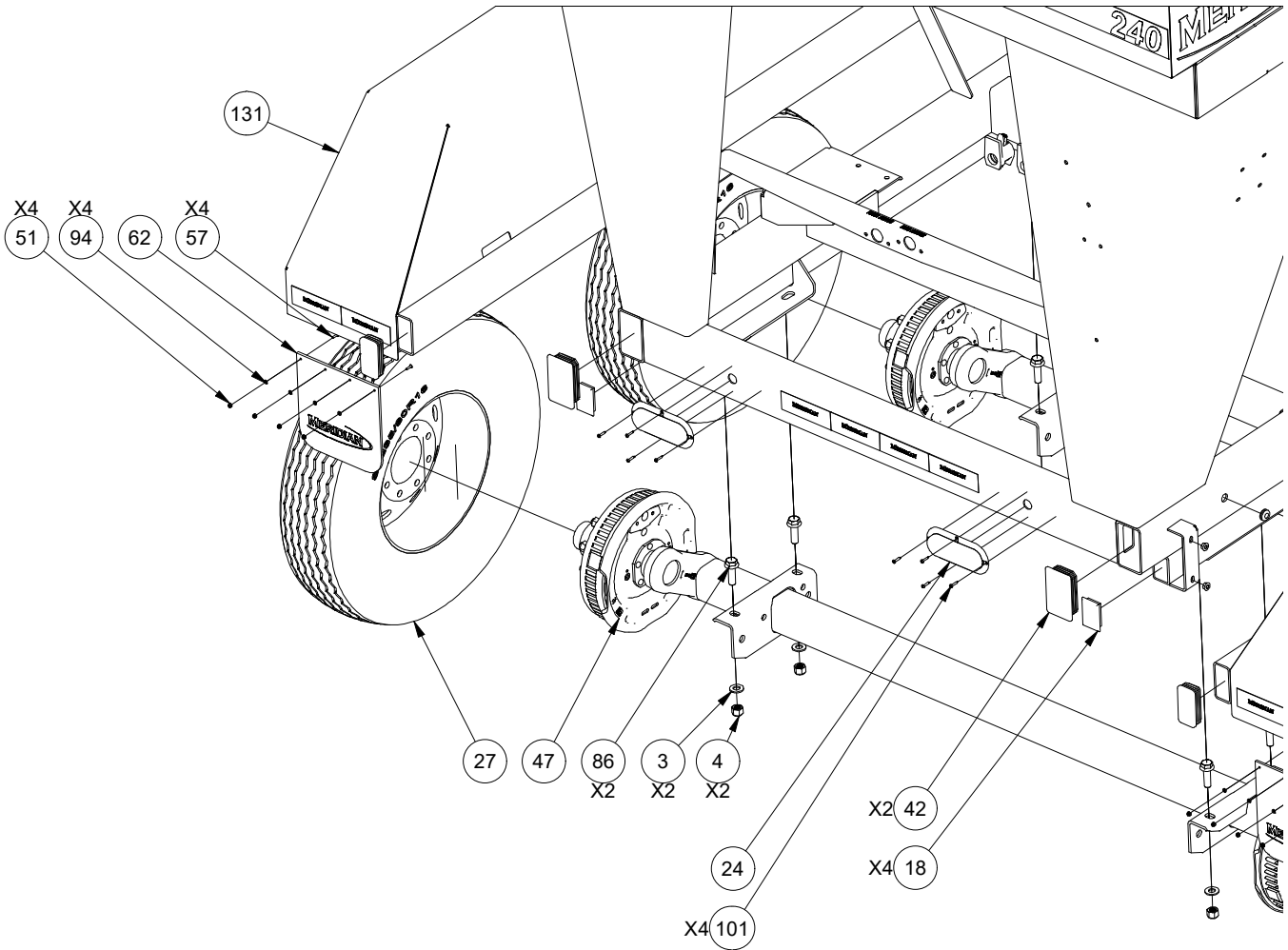
Table 4 - Slide Gate Assembly - 240FF

| ITEM | QTY | PART # | DESCRIPTION |
|------|-----|----------|---|
| 1 | 1 | 26334 | GATE HOUSING WELDMENT |
| 2 | 1 | 26340 | UHMW GATE GUIDE (RIGHT) 240FF |
| 3 | 1 | 23606-00 | UHMW GATE GUIDE (END) |
| 4 | 1 | 26341 | UHMW GATE GUIDE (LEFT) 240FF |
| 5 | 1 | 26336 | BOTTOM GATE WELDMENT |
| 6 | 1 | 26337 | TOP GATE WELDMENT |
| 7 | 2 | 19795 | PIN, COTTER 1/8 X 1 EXTENDED PRONG SQUARE CUT TYPE |
| 8 | 1 | 23725-01 | GATE BOOT SKIRT |
| 9 | 1 | 25332 | GATE BOOT SKIRT RETAINER |
| 10 | 2 | 19404 | BUSHING, NYLON 1 INCH |
| 11 | 2 | 18361 | CLEVIS PIN Ø3/8" X 1 3/4" (1 33/64" EFFECTIVE LENGTH) |
| 12 | 4 | 19568 | BOLT, HEX, FLANGED, 5/16-18 UNC X 0.75 |
| 13 | 4 | 19318 | NUT, HEX, FLANGED, 5/16-18 UNC |
| 14 | 3 | 19129 | RIVET Ø3/16" (.375"-.500" GRIP) SS WIDE DOME |
| 15 | 3 | 19130 | BACK-UP WASHER FOR 3/16" RIVET, 1/2" OD |
| 16 | 6 | 19576 | 10-16 X 1" SELF DRILLING HEX WASHER HEAD SCREW |
| 17 | 6 | 18482 | 10-16 X 1/2" SELF DRILLING HEX WASHER HEAD SCREW |

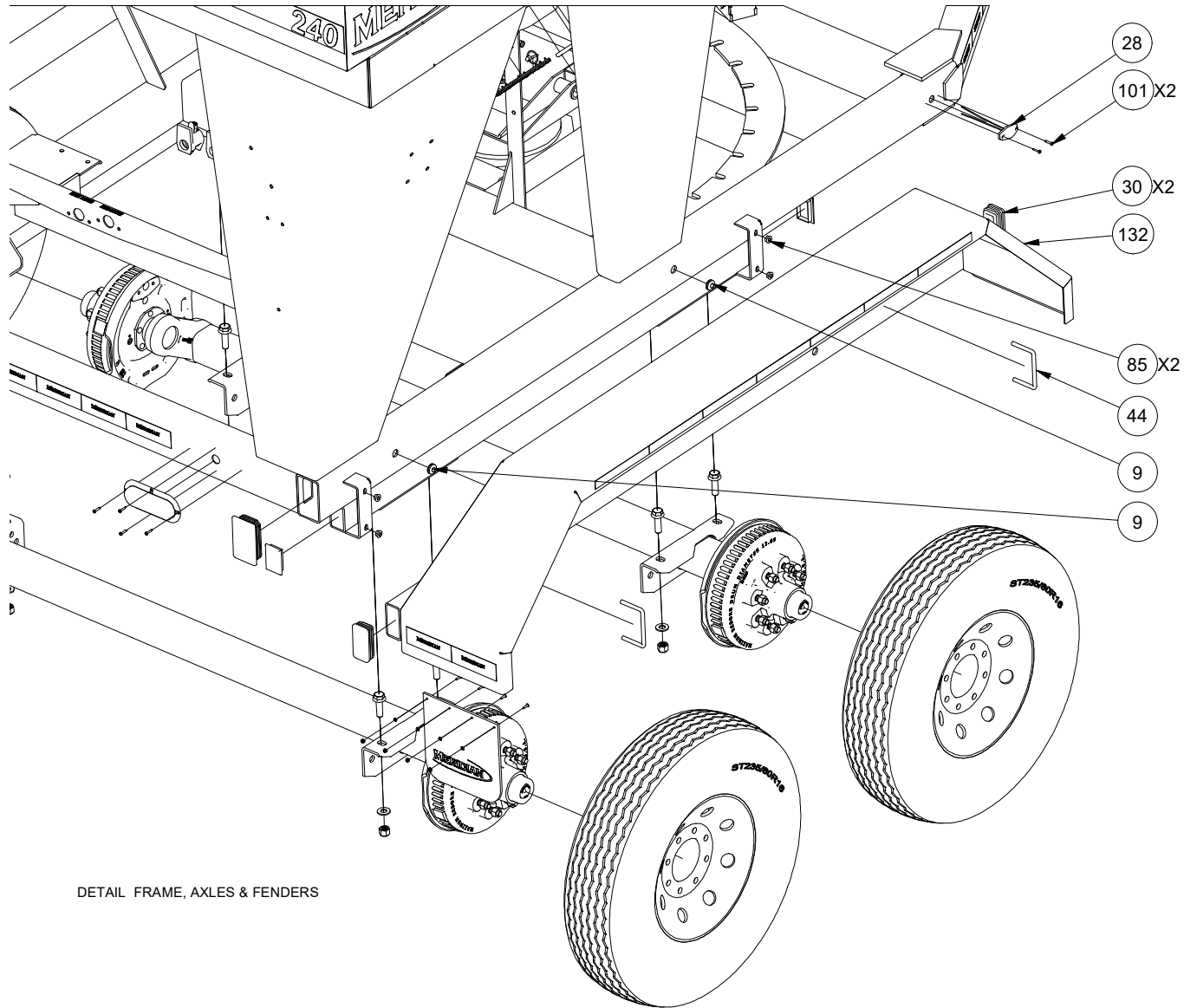








DETAIL FRAME, AXLES & FENDERS



DETAIL FRAME, AXLES & FENDERS

HYDRAULIC LAYOUT

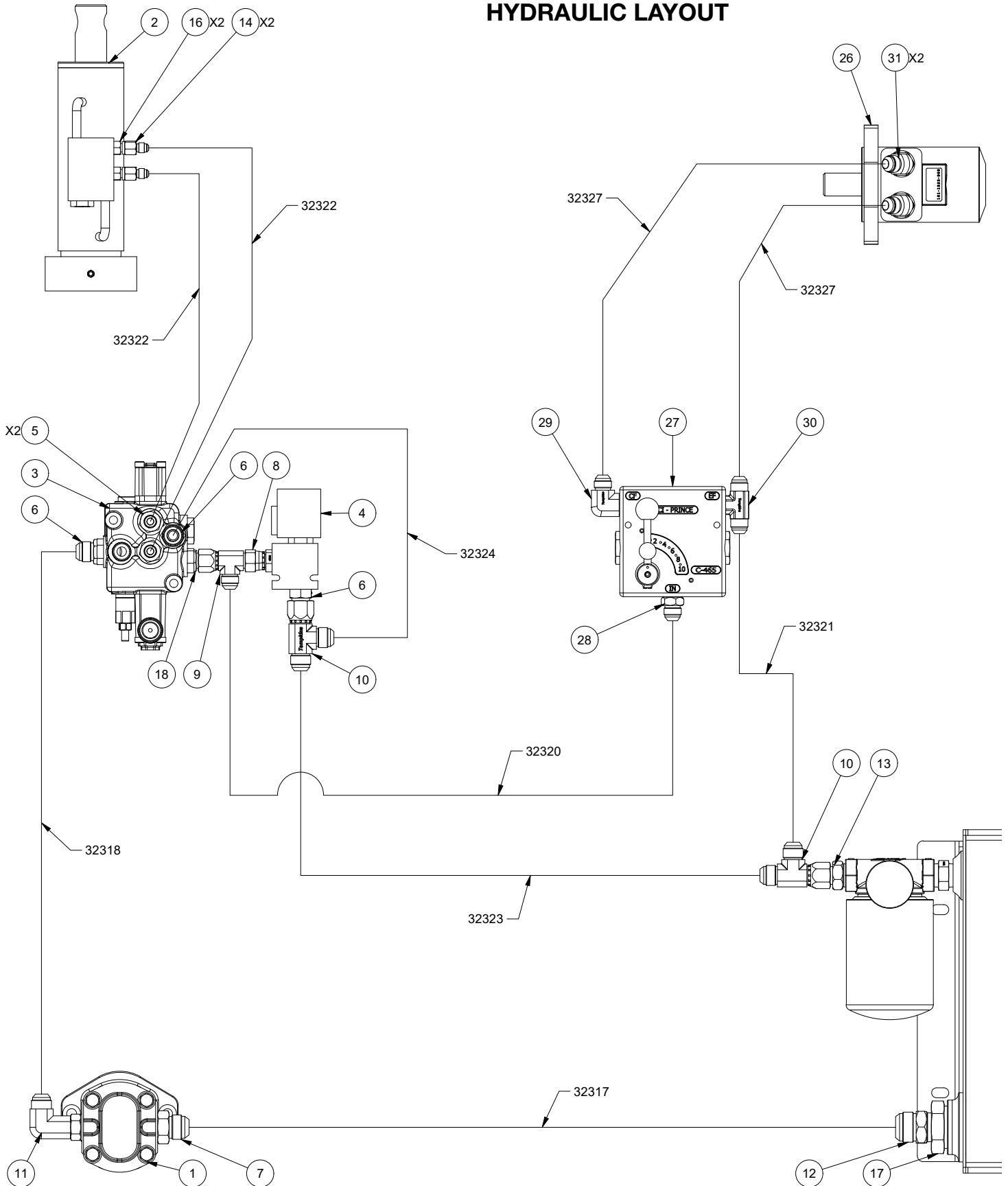
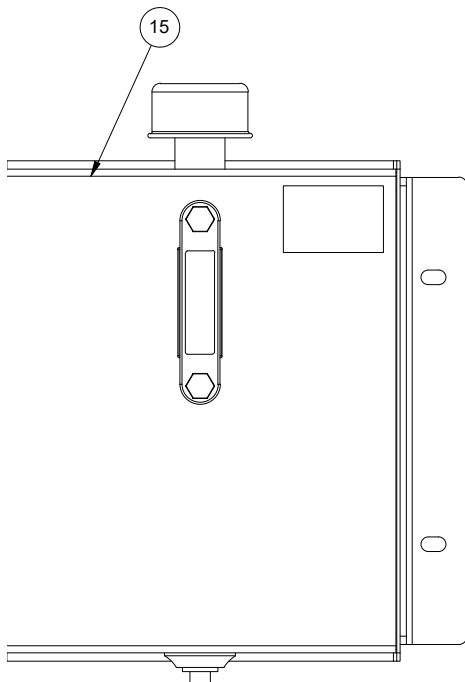


Table 5 - Hydraulic Layout for 240 Forward Facing

| ITEM | QTY | PART # | DESCRIPTION |
|------|-----|--------|---|
| 1 | 1 | 19295 | HYDRAULIC PUMP |
| 2 | 1 | 19150 | LIFT CYLINDER |
| 3 | 1 | 18293 | MONOBLOCK VALVE SINGLE SPOOL 1073201 M45-4-HP WCHA |
| 4 | 1 | 18295 | CONVEYOR ON/OFF SOLENOID |
| 5 | 2 | 18283 | ADAPTE HYD 3/4"-16 MALE SAE O-RING BOSS TO 9/16"-18 MALE SAE 37 DEG |
| 6 | 3 | 18280 | ADAPTER HYD 3/4"-16 MALE SAE ORING TO 7/8"-14 MALE SAE 37 DEG |
| 7 | 1 | 18285 | ADAPTER HYD 1 1/16"-12 MALE SAE ORING BOSS TO 1 1/16"-12 MALE SAE 37° |
| 8 | 1 | 18286 | ADAPTER HYD 3/4"-16 MALE SAE ORING BOSS TO 3/4"-16 FEMALE SAE 37 DEG SWIVEL |
| 9 | 1 | 18289 | ADAPTER HYD TEE 3/4"-16 FEMALE SAE 37° BULKHEAD, 3/4"-16 MALE SAE 37°, 3/4"-16 MALE SAE 37° |
| 10 | 2 | 18290 | ADAPTER HYD TEE 7/8"-14 FEMALE SAE 37° BULKHEAD, 7/8"-14 MALE SAE 37°, 7/8"-14 MALE SAE 37° |
| 11 | 1 | 18292 | ADAPTER HYD ELBOW 7/8"-14 MALE SAE ORING BOSS (LONG) TO 7/8"-14 MALE SAE 37° |
| 12 | 1 | 18288 | ADAPTER HYD TEE 1"-11 1/2 MALE NPT TO 1 5/16"-12 MALE SAE 37 DEG |
| 13 | 1 | 18422 | ADAPTER HYD 3/4"-14 NPT TO 7/8"-14 SAE 37 DEG |
| 14 | 2 | 17040 | ORIFICE 7/16"-20 JIC 37 DEG W/ 0.06375 RESTRICTION HOLE |
| 15 | 1 | 19294 | HYDRAULIC OIL TANK ASSEMBLY 11 GAL W/FILTER |
| 16 | 2 | 17720 | ADAPTER HYD 7/16"-20 SAE ORING BOSS TO 7/16"-20 SAE 37 DEG |
| 17 | 1 | 17132 | REDUCER - 24 NPT TO 16 NPT |
| 18 | 1 | 18282 | HYD ADAPTER 3/4-16 M SAE O-RIN BOSS TO 3/4-16 M SAE 37° |
| 19 | 1 | 32317 | HOSE HYD TANK TO PUMP 1" |
| 20 | 1 | 32318 | HOSE HYD PUMP TO VALVE 1/2" |
| 21 | 1 | 32320 | HOSE HYD VALVE TO FLOW CONTROL 1/2" |
| 22 | 1 | 32321 | HOSE HYD FLOW CONTROL TO TANK 1/2" |
| 23 | 2 | 32322 | HOSE HYD VALVE TO LIFT CYL 1/4" |
| 24 | 1 | 32323 | HOSE HYD VALVE TO TANK 1/2" |
| 25 | 1 | 32324 | HOSE HYD VALVE JUMPER 1/2" |
| 26 | 1 | 19769 | HYDRAULIC MOTOR - 2.8 IN ³ |
| 27 | 1 | 18294 | FLOW CONTROL VALVE MANUAL W-1950-8 |
| 28 | 1 | 18287 | ADAPTER HYD 1/2"-14 NPT TO 3/4"-16 SAE 37 DEG |
| 29 | 1 | 18423 | ADAPTER HYD ELBOW 1/2"-14 NPT TO 3/4"-16 SAE 37 DEG |
| 30 | 1 | 18424 | ADAPTER HYD TEE 1/2"-14 NPT,3/4"-16 SAE 37°, 3/4"-16 SAE 37° |
| 31 | 2 | 17999 | ADAPTER HYD 45 DEG 7/8-14 SAE ORING BOSS TO 3/4"-16 SAE 37 DEG |
| 32 | 2 | 32327 | HOSE - MOTOR TO FLOW CONTROL 1/2" |



6" HYDRAULIC CONVEYOR 240 FF BASIC

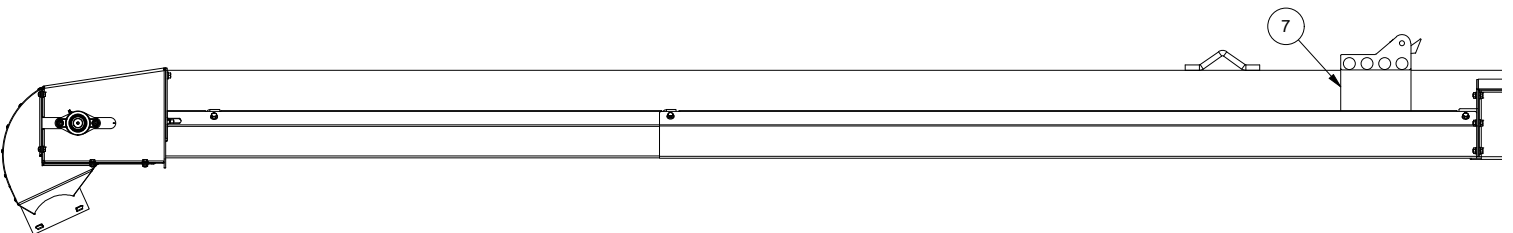
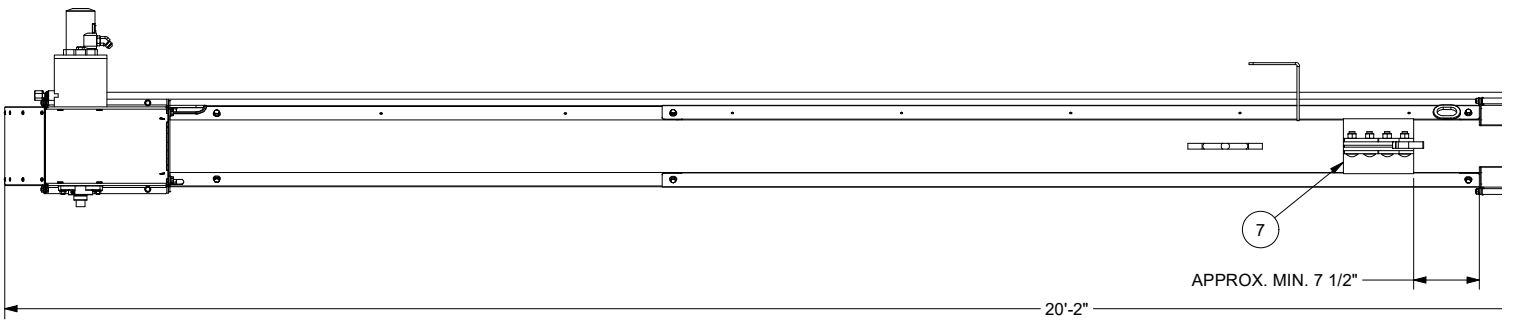
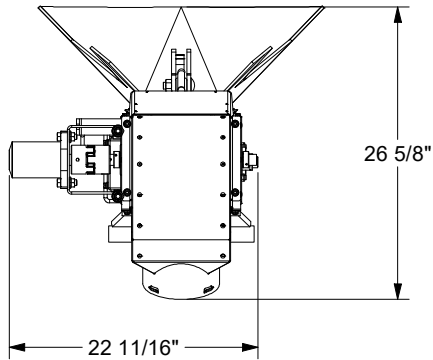
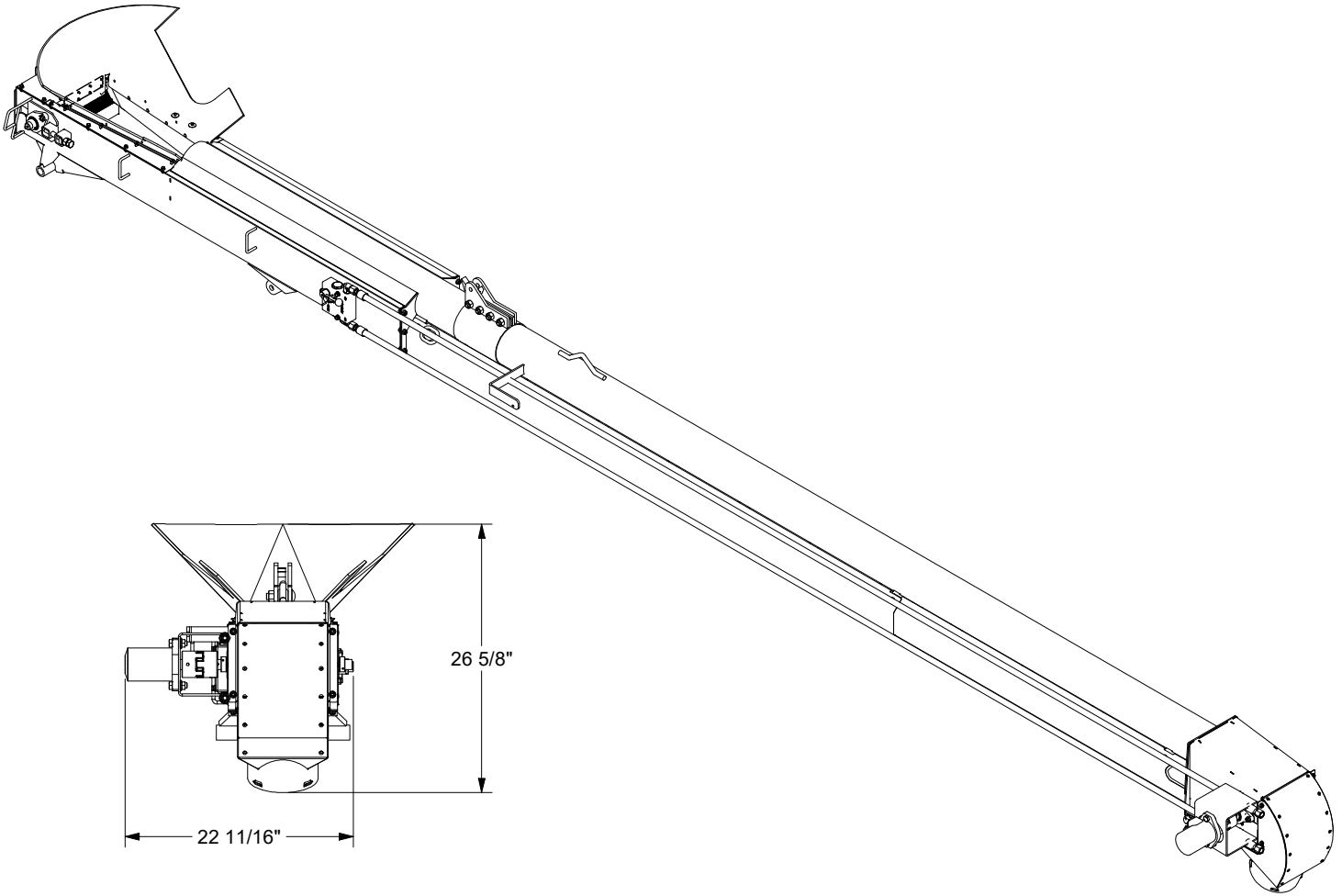
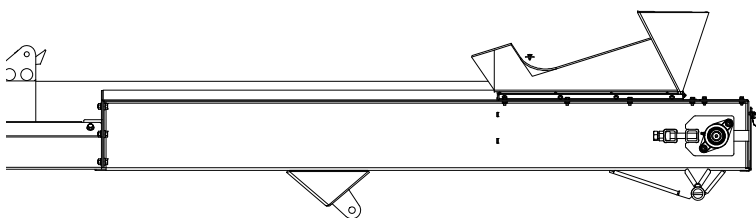
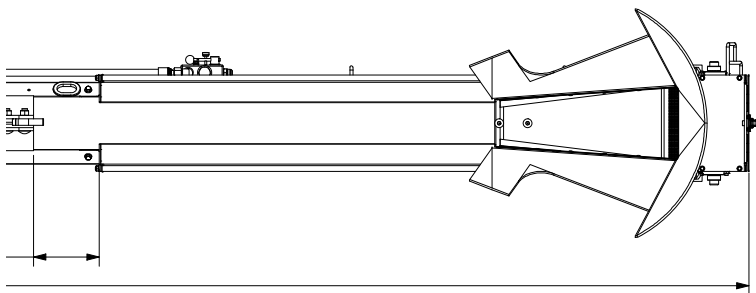
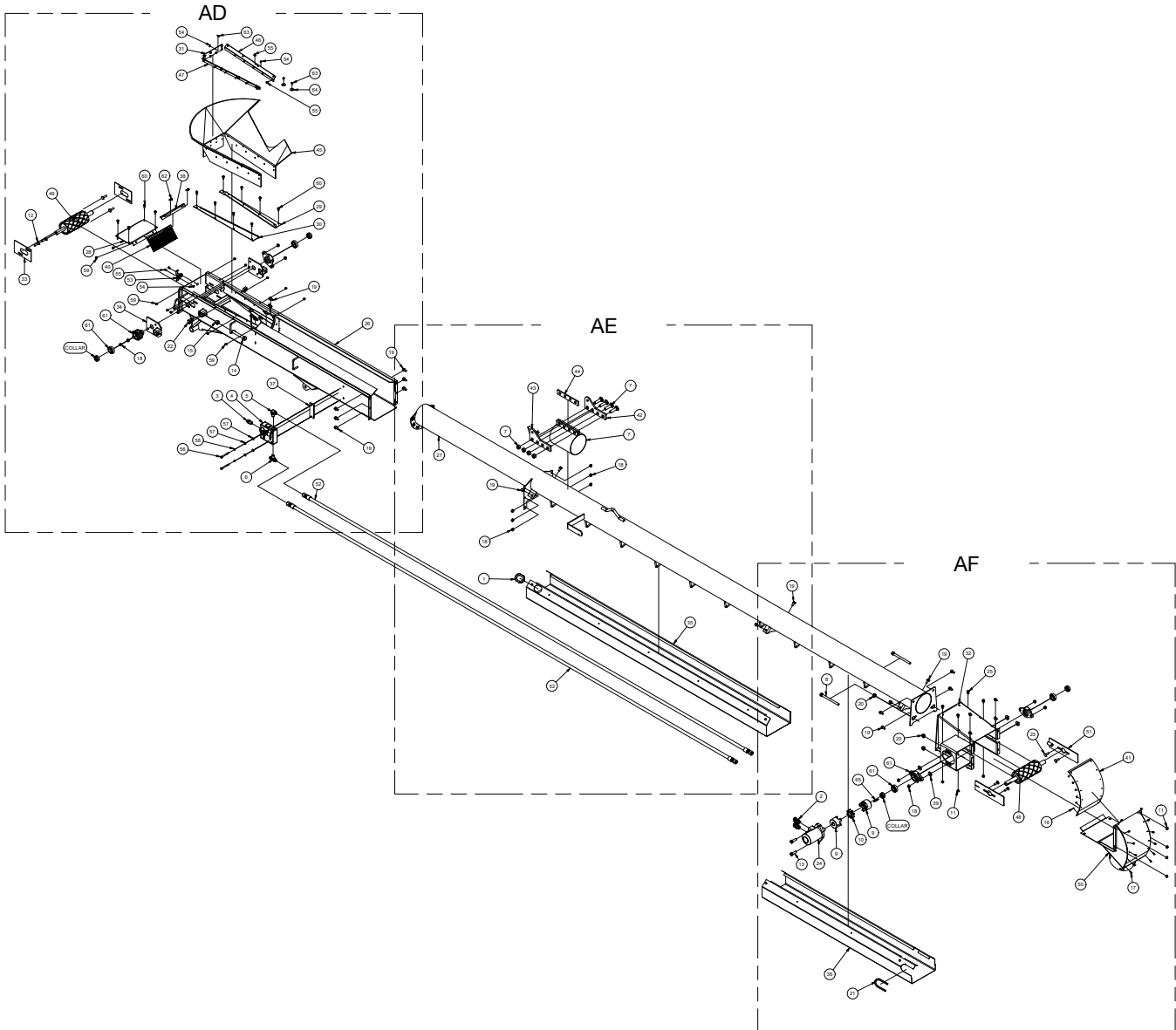


Table 6 - 6" Hydraulic Conveyor 240 FF Basic

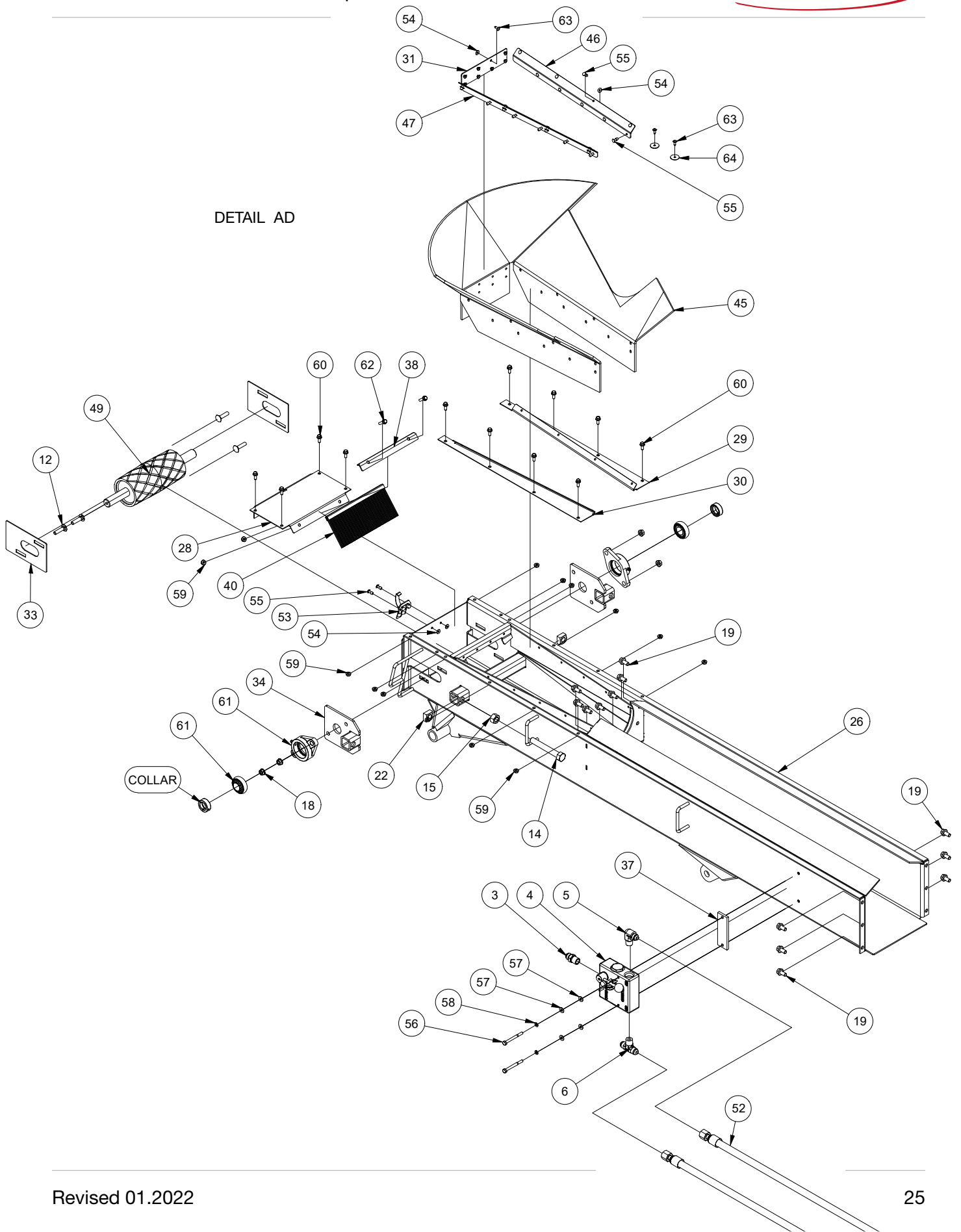
| ITEM QTY | PART # | DESCRIPTION |
|----------|--------|--|
| 1 | 1 | 14061 RUBBER GROMMET (RPD ITEM# G3373) |
| 2 | 2 | 17999 ADAPTER HYD 45 DEG 7/8-14 SAE ORING BOSS TO 3/4"-16 SAE 37 DEG |
| 3 | 1 | 18287 ADAPTER HYD 1/2"-14 NPT TO 3/4"-16 SAE 37 DEG |
| 4 | 1 | 18294 FLOW CONTROL VALVE MANUAL W-1950-8 |
| 5 | 1 | 18423 ADAPTER HYD ELBOW 1/2"-14 NPT TO 3/4"-16 SAE 37 DEG |
| 6 | 1 | 18424 ADAPTER HYD TEE 1/2"-14 NPT, 3/4"-16 SAE 37°, 3/4"-16 SAE 37° |
| 7 | 1 | 18760 CLAMP COMPRESSION 6IN |
| 8 | 2 | 18960 BOLT, HEX, 1/2-13 UNC X 6.5 STEEL, MILD, FULL THREAD |
| 9 | 2 | 19249 COUPLING 1" X 1/4" KEY |
| 10 | 1 | 19291 RED COUPLING SPIDER |
| 11 | 8 | 19318 NUT, HEX, FLANGED, 5/16-18 UNC |
| 12 | 4 | 19335 Ø3/8"-16 UNC X 1 1/2" CARRIAGE BOLT |
| 13 | 2 | 19355 Ø1/2"-13 UNC X 1 1/2" H.H.C.S. |
| 14 | 2 | 19380 Ø5/8"-11 UNC X 4 1/2" H.H. BOLT |
| 15 | 2 | 19382 Ø5/8"-11 UNC HEX NUT |
| 16 | 12 | 19547 Ø3/8" BACK-UP WASHER FOR 1/8" RIVET |
| 17 | 12 | 19548 Ø1/8" - .188 TO .250 GRIP STEEL RIVET |
| 18 | 14 | 19564 NUT, HEX, FLANGED, 3/8-16 UNC |
| 19 | 23 | 19577 BOLT, HEX, FLANGED, 3/8-16 UNC X 0.75 |
| 20 | 4 | 19595 NUT, HEX, FLANGED, 1/2-13 UNC |
| 21 | 1 | 19660 EDGE TRIM |
| 22 | 2 | 19663 Ø5/8-11 UNC SQUARE NUT |
| 23 | 4 | 19695 Ø3/8"-16 UNC X 1 1/4" CARRIAGE BOLT |
| 24 | 1 | 19769 HYDRAULIC MOTOR - 2.8 IN ³ |
| 25 | 8 | 19772 Ø5/16"-18 UNC X 1/2" FLANGED H.H.C.S. |

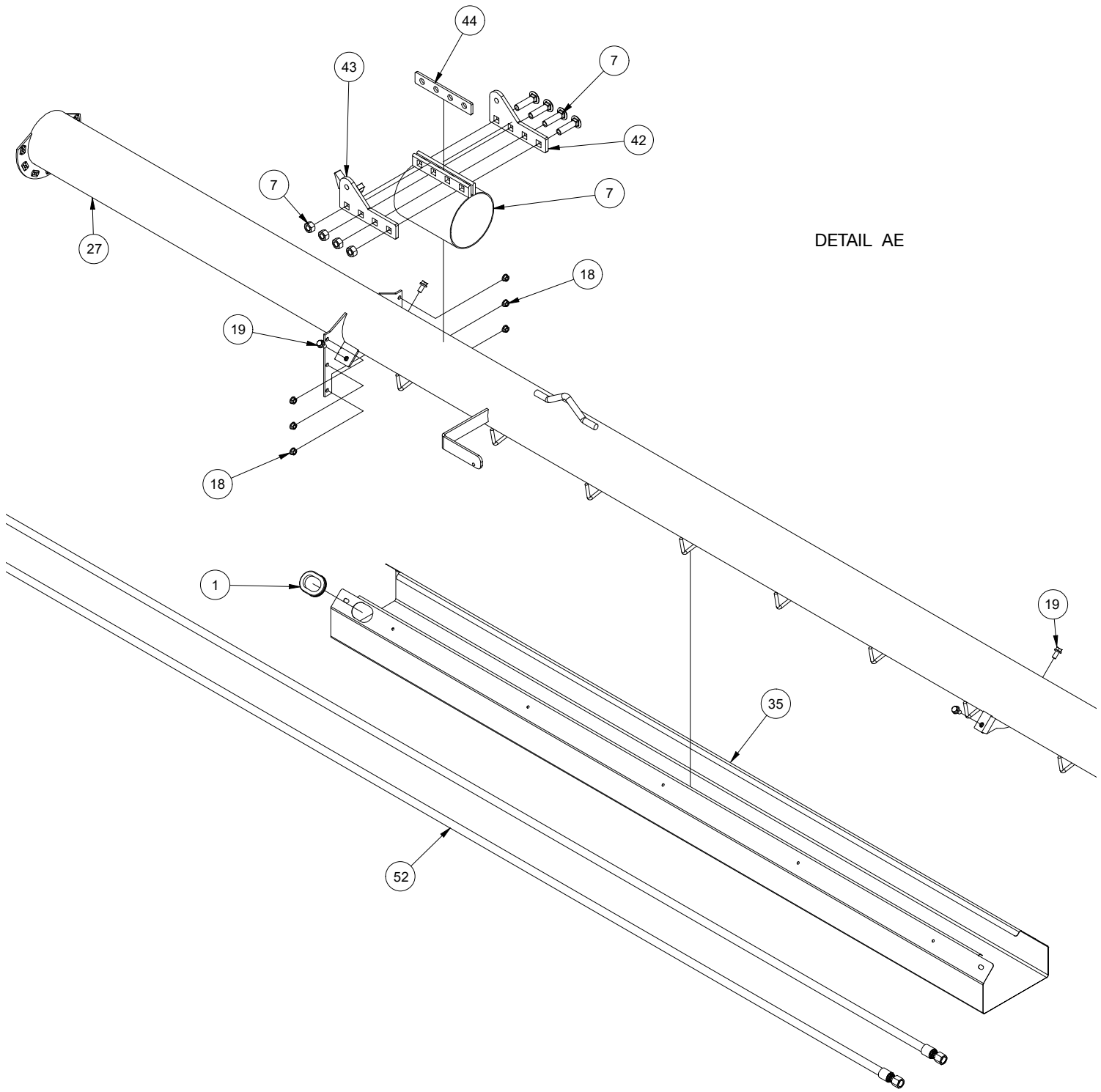
| | | | |
|----|------|---------------------------------------|--|
| 26 | 1 | 23324-00 | CONVEYOR PAN WELDMENT 6", 240FF/240RT |
| 27 | 1 | 23331-00 | CONVEYOR TUBE ASSEMBLY |
| 28 | 1 | 23335-00 | BRUSH HOLDER PLATE |
| 29 | 1 | 23336-00 | LEFT CAP PLATE |
| 30 | 1 | 23337-01 | RIGHT CAP PLATE |
| 31 | 1 | 23338-00 | END SKIRT RETAIN PLATE |
| 32 | 1 | 23339-00 | DISCHARGE HOOD WELDMENT |
| 33 | 2 | 23341-00 | ROLLER COVER PLATE |
| 34 | 2 | 23687-00 | ROLLER SLIDE PLATE WELDMENT |
| 35 | 1 | 25489 | BELT GUARD GALVINIZED |
| 36 | 1 | 25862 | GALVANIZED BELT GUARD (TOP SECTION) |
| 37 | 1 | 26420 | PLATE SPACER FLOW CONTROL 242 |
| 38 | 1 | 27009-00 | BRUSH HOLDER CLAMP |
| 39 | 4 | 27019-00 | BELT TIGHTNER SPACER WASHER |
| 40 | 1 | 27051-00 | BRUSH |
| 41 | 1 | 27053-01 | RUBBER HOOD LINER |
| 42 | 1 | 29376 | DAMPENER PIN PLATE |
| 43 | 1 | 29377 | DAMPENER PIN REST PLATE |
| 44 | 1 | 29378 | SPACER |
| 45 | 1 | 29393 | 6" CONVEYOR BOOT |
| 46 | 1 | 29400 | RIGHT SIDE SKIRT RETAIN PLATE |
| 47 | 1 | 29401 | LEFT SIDE SKIRT RETAIN PLATE |
| 48 | 1 | 36200-01 | DRIVE ROLLER ASSEMBLY |
| 49 | 1 | 36201-02 | IDLER ROLLER ASSEMBLY |
| 50 | 1 | 36211-00 | DISCHARGE TRANSITION WELDMENT |
| 51 | 2 | 36217-00 | BELT TIGHTNER PLATE WELDMENT |
| 52 | 2 | 32327 | HOSE - MOTOR TO FLOW CONTROL 1/2" |
| 53 | 1 | 21257-00 | OVER-CENTER LATCH |
| 54 | 18 | 19130 | BACK-UP WASHER FOR 3/16" RIVET, 1/2" OD |
| 55 | 20 | 19089 | RIVET Ø3/16" (.059"-.354" GRIP) CLOSED END SS |
| 56 | 2 | 17741 | BOLT, HEX, 1/4-20 UNC X 2.75 STEEL, MILD |
| 57 | 4 | 19307 | WASHER, FLAT 1/4 |
| 58 | 2 | 19308 | Ø1/4" LOCK WASHER STEEL MILD ZINC |
| 59 | 14 | 19126 | NUT, HEX, FLANGED, 1/4-20 UNC |
| 60 | 12 | 17922 | BOLT, HEX, FLANGED, STEEL, MILD 1/4-20 UNC X 0.625 |
| 61 | 4 EA | 27040-00 & 21258-00 & 21258-00 COLLAR | HOUSING/BEARING/COLLAR ASSEMBLY |
| 62 | 2 | 10040 | BOLT, HEX, FLANGED, STEEL, MILD 1/4-20 UNC X 1 |
| 63 | 10 | 19129 | RIVET Ø3/16" (.375"-.500" GRIP) SS WIDE DOME |
| 64 | 2 | 10563 | FENDER WASHER 3/16" X 1" OD STEEL ZINC |
| 65 | 1 | 21261-00 | DRIVE KEY 1/4" X 1/4" |



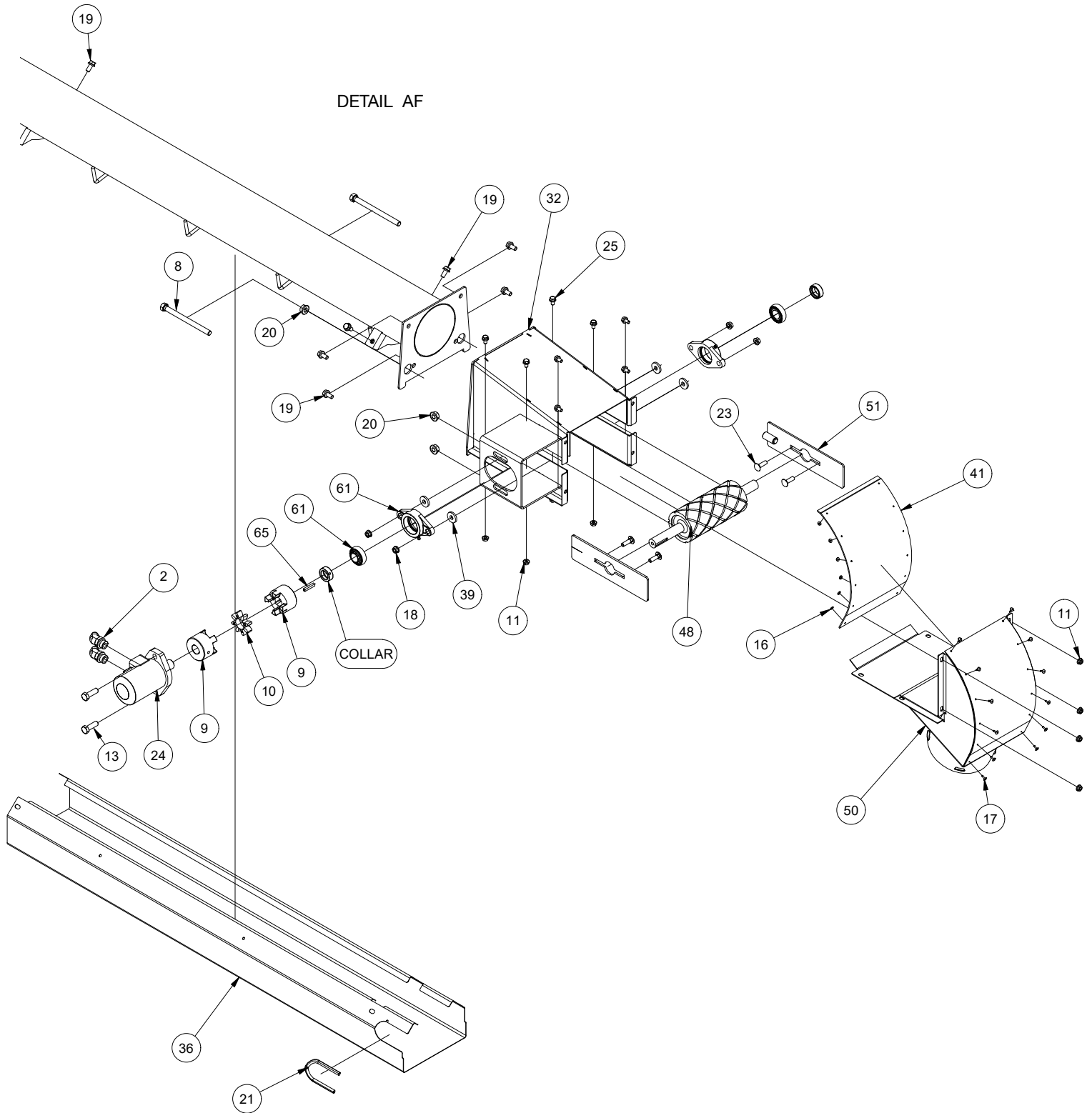


DETAIL AD





DETAIL AE



TURRET ASSEMBLY

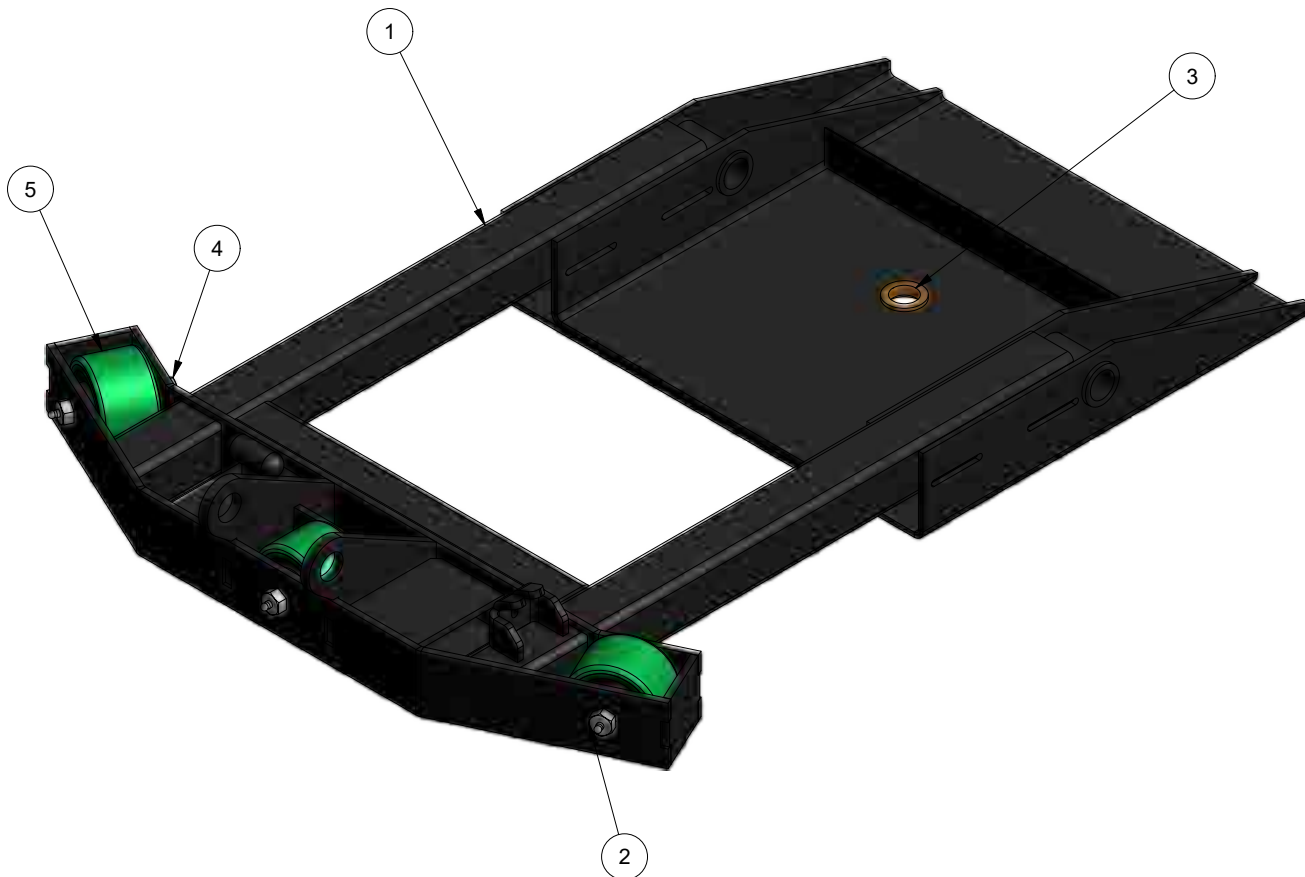


Table 7 - Turret Assembly

| ITEM | QTY | PART # | DESCRIPTION |
|------|-----|--------|--|
| 1 | 1 | 31508 | TURRET, WELDMENT, 2011, MANUAL |
| 2 | 3 | 18451 | WHEEL AXLE 1/2" DIA X 3 3/8" GREASED MC#23595T44 |
| 3 | 1 | 19405 | BUSHING |
| 4 | 3 | 19595 | NUT, HEX, FLANGED, 1/2-13 UNC |
| 5 | 3 | 18448 | ROLLER POLYURETHANE 3 1/4 X 2 |

LIMITED WARRANTY STATEMENT

Meridian Manufacturing Inc, hereinafter referred to as Meridian®, warrants all products sold hereunder to be free from defects in manufacturing and workmanship, under normal and proper storage, service, and use, for a period of 2 (TWO) years: the first year - full warranty on Parts and Labor, the second year - Parts Only; when used in accordance with the manufacturer's guidelines, from the first date of use. Our liability extends only to the repair or replacement of the defective parts. No labor charge for the correction of the defect, by repair or replacement, will be paid by Meridian, unless prior written authorization has been granted by Meridian. Units that have been in service, then sold will carry the remainder of the 2 year warranty from Meridian.

This warranty is not applicable to, and Meridian makes no warranty with respect to, any parts not installed by Meridian or its representatives.

No implied warranty shall apply beyond the aforementioned warranty period. The foregoing warranty is exclusive of all other statutory, written or oral warranties, and no other warranties of any kind, statutory or otherwise, are given or herein expressed.

Meridian will not, under any circumstance; whether as a result of breach of contract, breach of warranty, tort, strict liability or otherwise; be liable for consequential, incidental, special or exemplary damages. This includes, but not limited to: loss of profits, loss of use or damage to any property or equipment, cost of capital, cost of substitute product, facilities or services, down time costs or claim of claimant's customers. Meridian liability for all claims of any kind or for any loss or damage arising out of, resulting from or concerning any aspect of this warranty, or from the products or services furnished hereunder; shall not exceed the purchase price allocable to the specific product which gives rise to the claim. Any or all such liability shall terminate upon the expiration of the warranty set forth above.

Certain chemicals may exist in the end user's locations, which may release airborne contaminants that can directly impact the integrity of essential paint and components. Exposure of these chemicals, to components with different chemical combinations may result in significant damage to paint, decals and mechanical failure. Meridian warranty does not cover these conditions unless otherwise noted.

All Meridian products that fall under warranty and needs service must be brought back to the dealer or point of purchase, unless otherwise agreed upon by the Meridian Warranty Department.

Register your product at: www.meridianmfg.com

For warranty information, email: warrantyusa@meridianmfg.com | phone: (800) 437-2334

WARRANTY REQUEST PROCEDURE

1. The product must be registered with Meridian Manufacturing Inc.
2. The purchaser must contact the dealer, from where the unit was purchased, immediately upon discovery of any defects.
3. A completed Warranty Request (Claim) Form must be submitted by the dealer to the Meridian's warranty representative for review and any subsequent course of action.
 - Warranty requests must be completed with ALL required information in order it to be considered for approval.
 - Send photographs of the entire piece of equipment, and of the specific area of concern.
4. Warranty repair work will only be performed by Meridian or an approved representative of Meridian. Warranty work completed prior to Meridian's approval will NOT be honoured. Failure to follow this procedure may affect any or all of this warranty.
5. All warranty requests will be adjudicated at the sole discretion of Meridian and in accordance with the terms and conditions of the warranty.



(800) 437-2334 | www.meridianmfg.com | tenders@meridianmfg.com